

THE MISSISSIPPI BAR

2016 ECONOMIC SURVEY

Table of Contents

Introduction.....	1
General member responses	2
Position and knowledge of practice operations	2
Personnel employed.....	3
What is the method of compensation for associates in your firm?	4
2016 / 2014 Comparative:	
Annual compensation – Associates by experience	4
Annual compensation – Legal Secretary by experience	5
Annual compensation – Legal Assistants by experience.....	5
Benefits offered to attract and retain personnel	6
What services does your firm contract out?.....	7
What percentage of your gross income is spent on non-salaried overhead?	7
What percentage of your gross income is spent on professional salaries?	8
What percentage of gross income is spent on technology, research, subscriptions and group health insurance?	8
Percentage of 2016 gross fees by area of practice?	9
What percentage of 2016 fees was used in certain billing methods?	10
How often do you bill clients?.....	10
The percentage of fees that were uncollectable comparative in 2016/2014	11
How often do you adjust hourly rates	11
Respondents by county	12
Respondents by gender	13
Respondents by age group	13
Respondents by ethnic background	14
Respondent’s legal education and training	14
What is your type of employment?.....	15
What is the status of your practice/employment?.....	15
On average, how many billable hours do you have per year, comparative 2016/2014	16
When you charge on an hourly basis, what is your standard hourly rate	16
Are you in private practice?.....	17
How many years have you been in private practice?.....	17
How long have you been a licensed attorney?.....	18
On average, your personal annual income from practicing law, comparative 2016/2014	18
What is the size of your firm?.....	19
Size of firm comparative 2016/2014.....	19
What is the structure of your firm?.....	20
Structure of firm comparative 2016/2014.....	20

Table of Contents
(Continued)

Thoughts on the economic circumstances of practicing law compared to last year	21
In an average month, how many hours do you spend on civic/community work?.....	21
In an average month, how many hours do you spend on pro bono legal work?.....	22
How many work days in 2016 did you take for vacation time	22
With regards to your own activities, the quantity of work comparative 2016/2014.....	23
The factors determining fees.....	24
Thoughts on future demands for paid billable lawyers services.....	24
Do you have professional liability insurance?	25
Thoughts on requirements and disclosures for professional liability insurance	25 - 26
What types of advertising/marketing do you or your firm use	26
Thoughts of your legal profession	27 - 28
Thoughts on the economic circumstances of practicing law	29

INTRODUCTION

The 2016 Mississippi Bar Economic Survey was administered electronically in September, 2017. The survey was made available to all Bar members through a link emailed to them.

The questions for the survey were suggested by the Mississippi Bar. The accounting firm of Grantham Poole was responsible for the administration and tabulation of the survey and its results. The last survey was conducted in 2015 using 2014 financial data. Where appropriate, comparative data is shown.

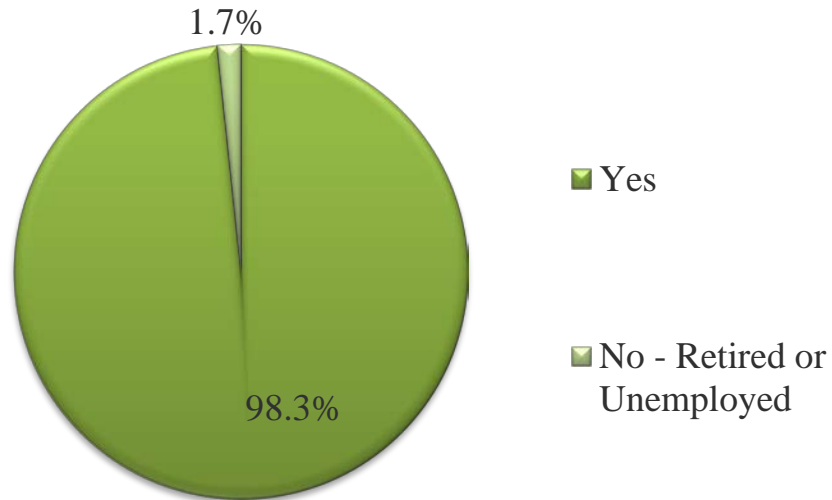
A total of 419 members responded and completed the survey. Of the responses received, the largest percentages were from Hinds county (29.06%), Madison county (12.45%) and Harrison county (7.55%). Over 13% of the respondents were out-of-state. General characteristics noted in the results included the following:

- 63.77% of the respondents were male; 36.23% were female
- 89.43% of the respondents were caucasian
- 95.47% of the respondents work full-time in the practice of law
- 51.70% graduated from the University of Mississippi School of Law; 32.45% graduated from the Mississippi College School of Law; 15.85% received their law degrees from other institutions
- Most participants were employees and almost a third were under the age of 35

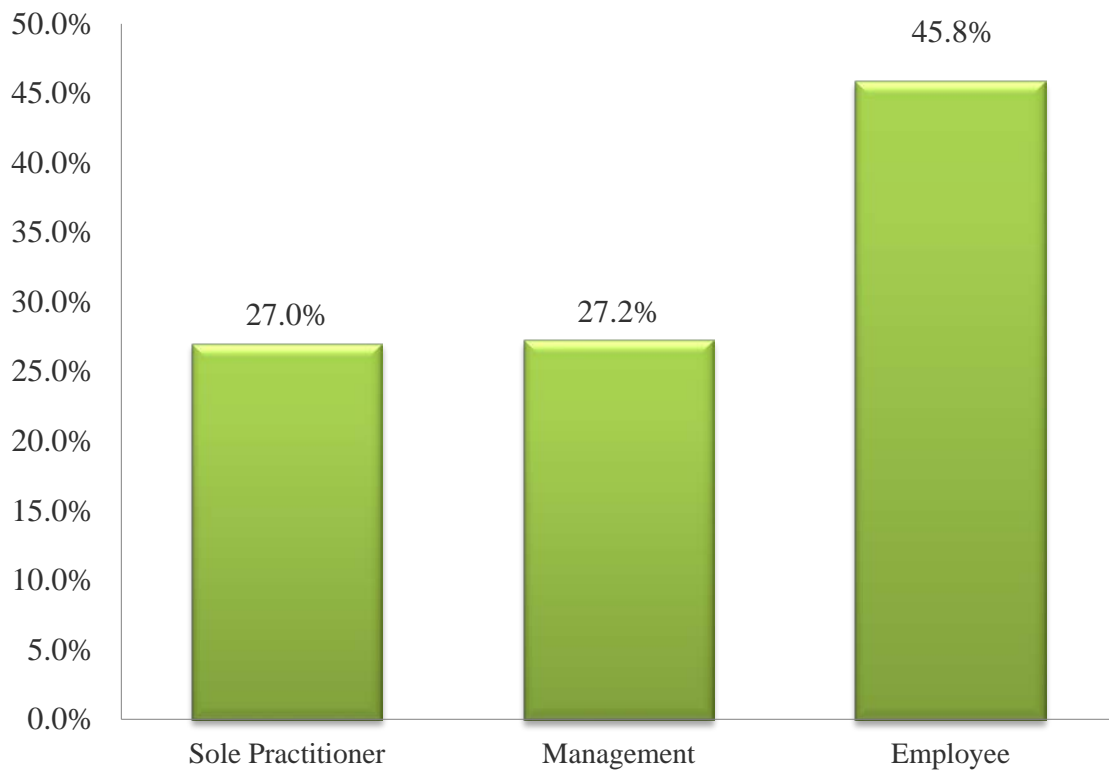
The charts that follow illustrate the answers to questions relating to firm structure and size, income and salaries, hourly rates and billable hours, marketing and personal satisfaction with the profession.

Thank you for your participation.

Are you an active practicing members of the Bar?

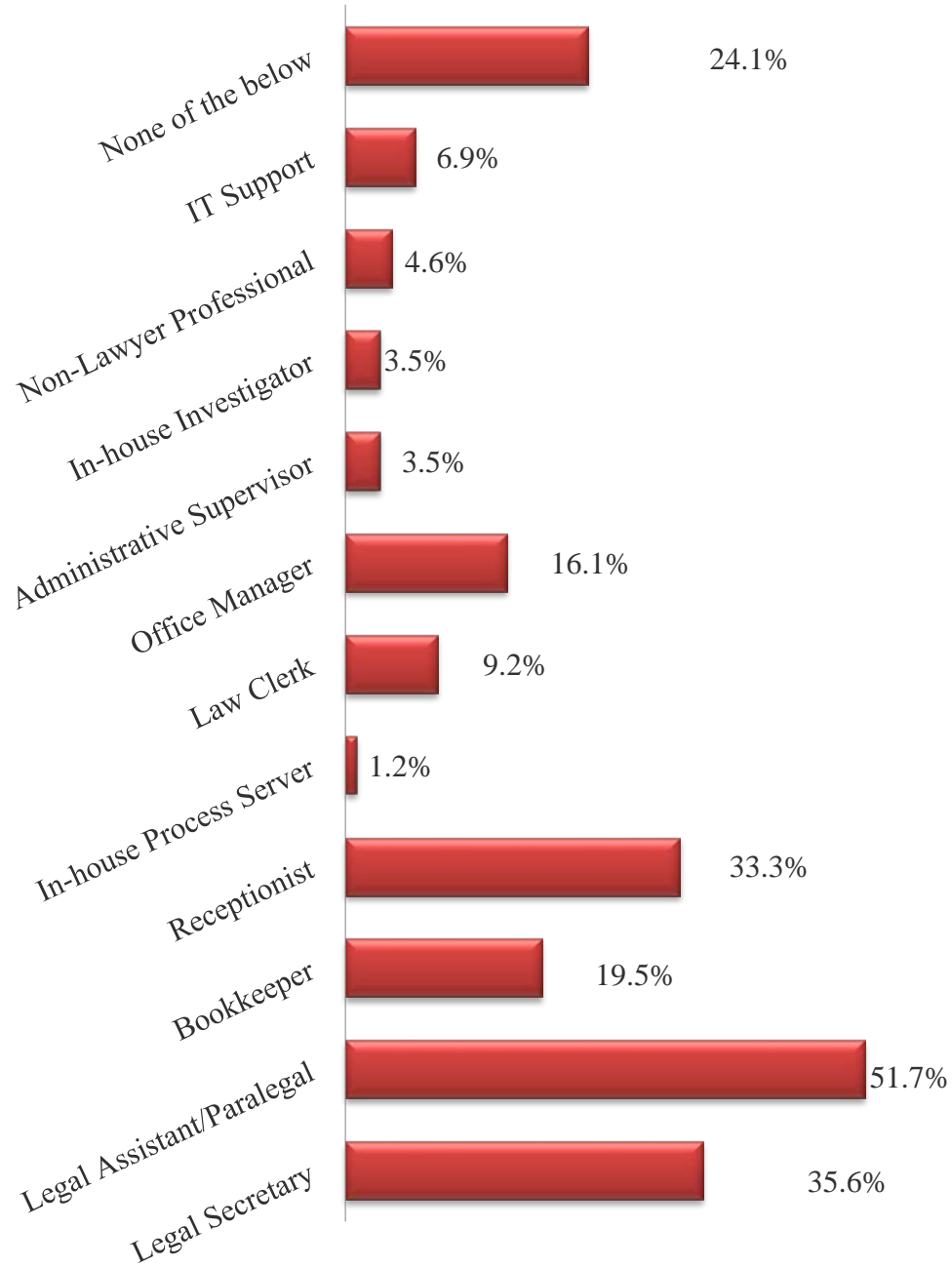


Position and knowledge of practice operations

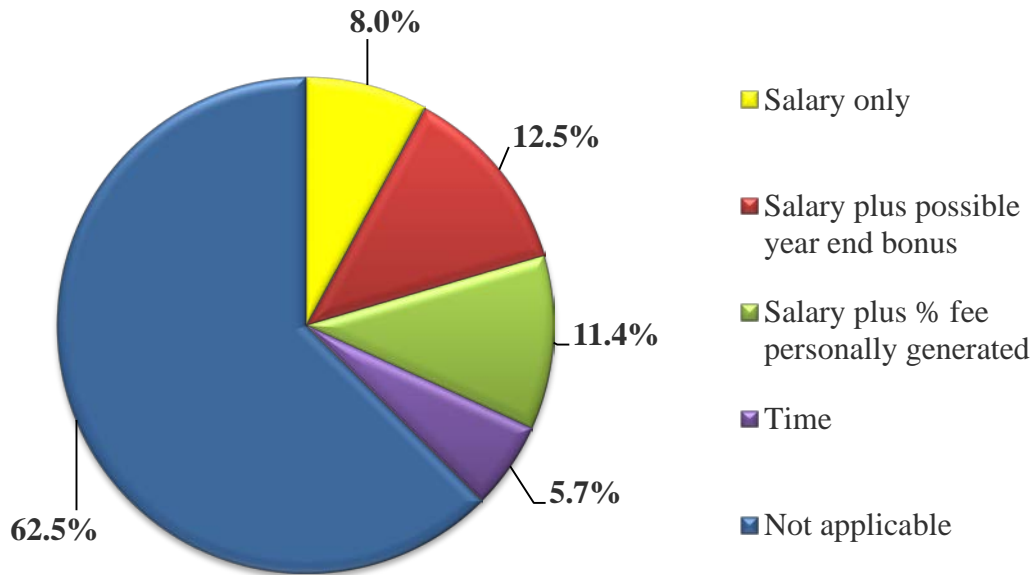


FIRM /EMPLOYER / EMPLOYEE DATA

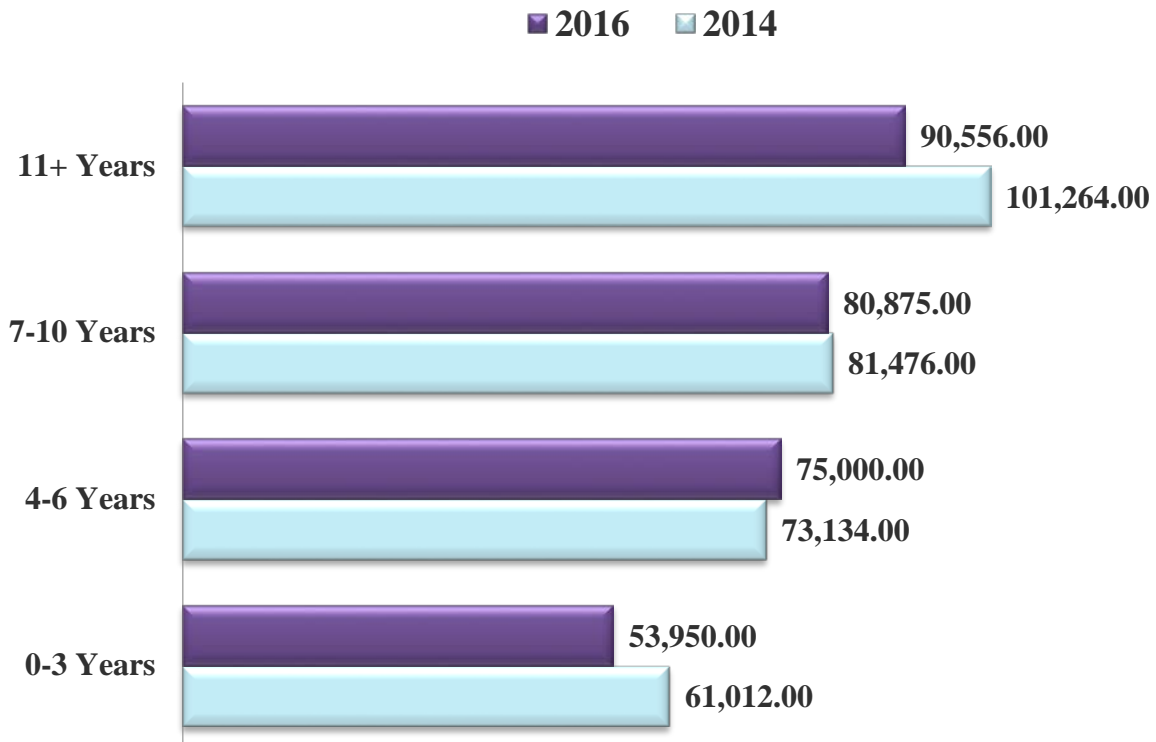
Personnel you or your office employs



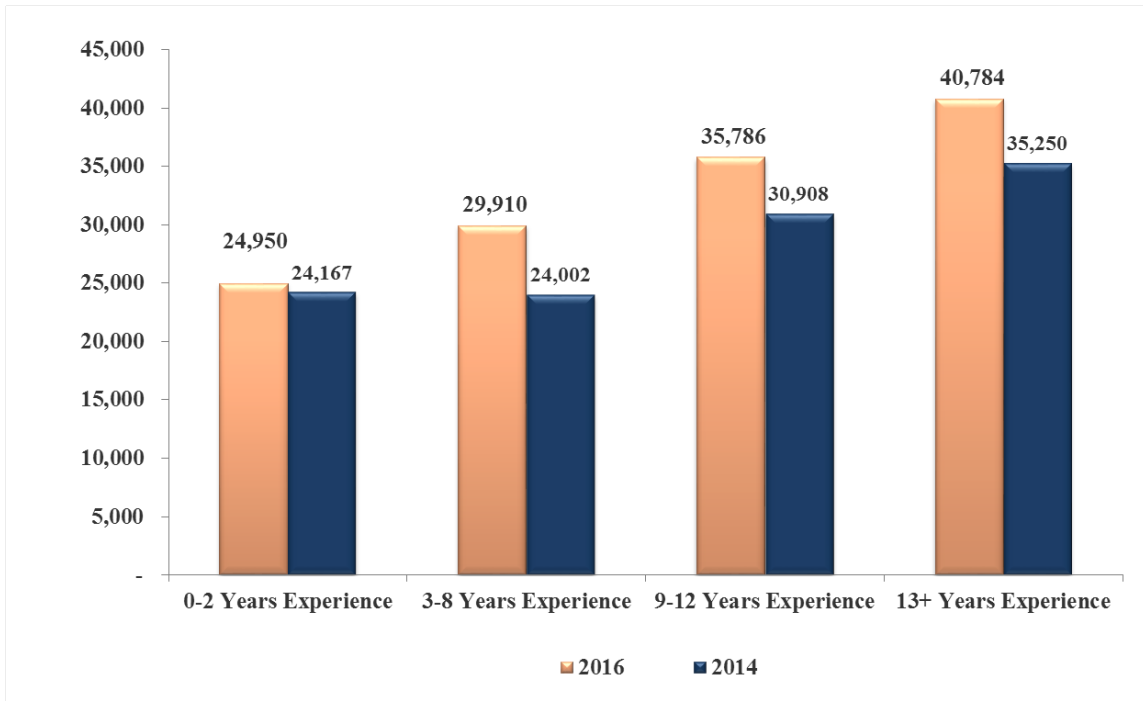
If you have associates, what is the usual method of compensation?



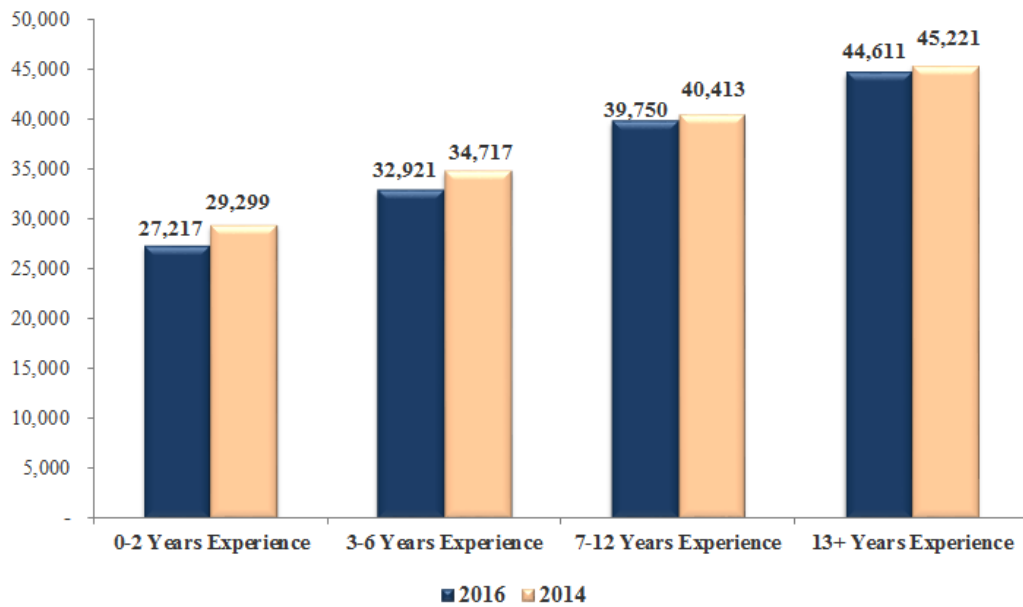
**What is the annual salary of an associate in your firm by experience?
(2016 / 2014 Comparative)**



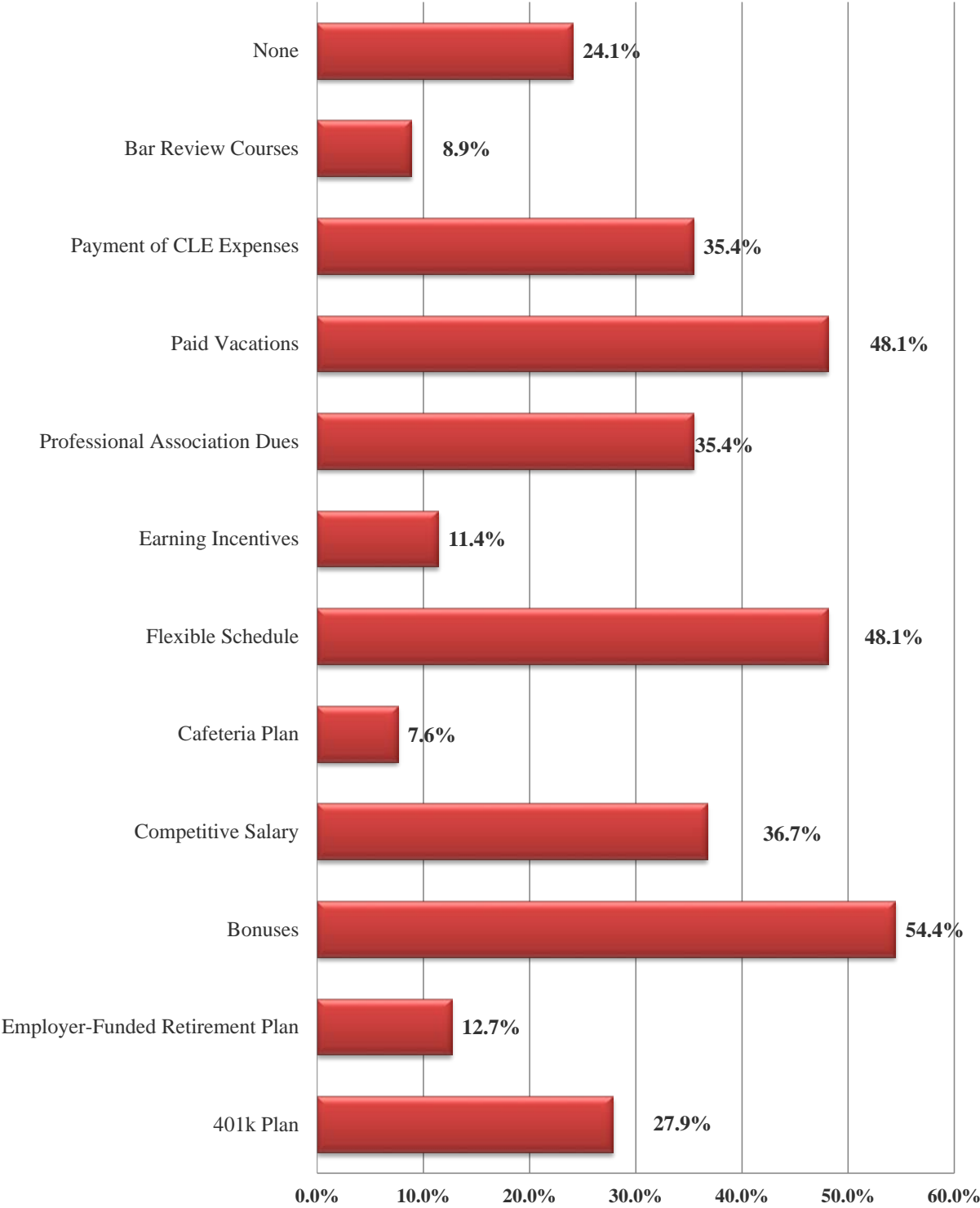
**What is the annual salary of a secretary in your firm?
(2016 / 2014 Comparative)**



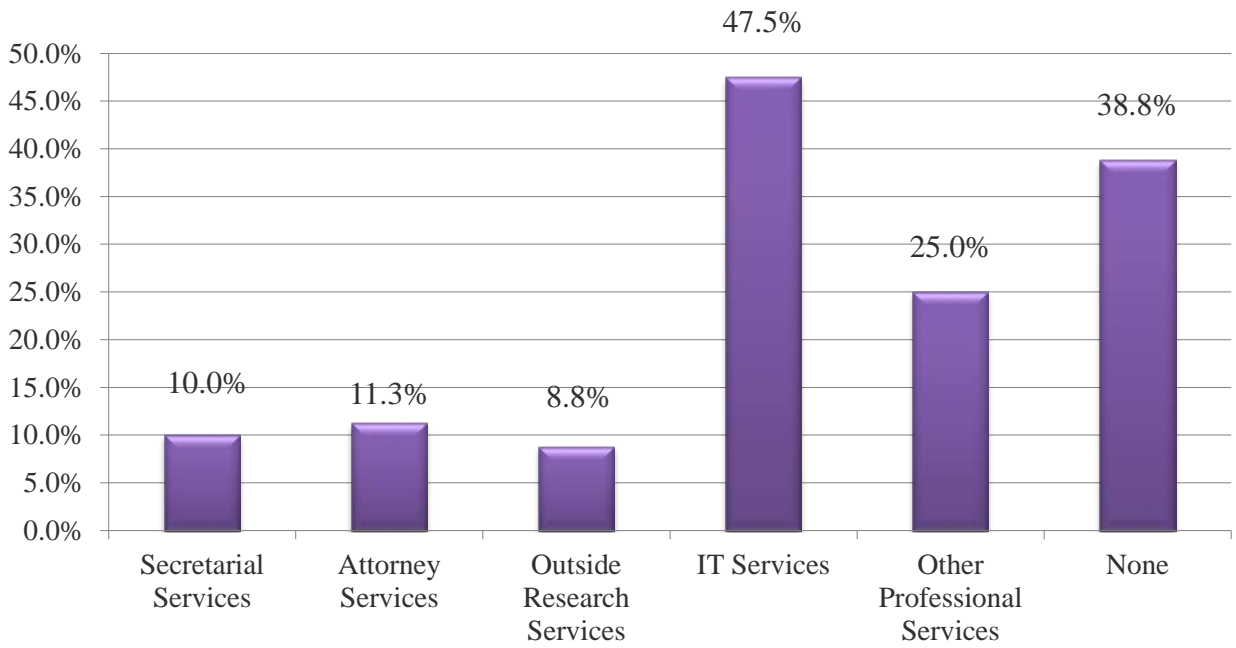
**What is the annual salary of a legal assistant/paralegal in your firm?
(2016 / 2014 Comparative)**



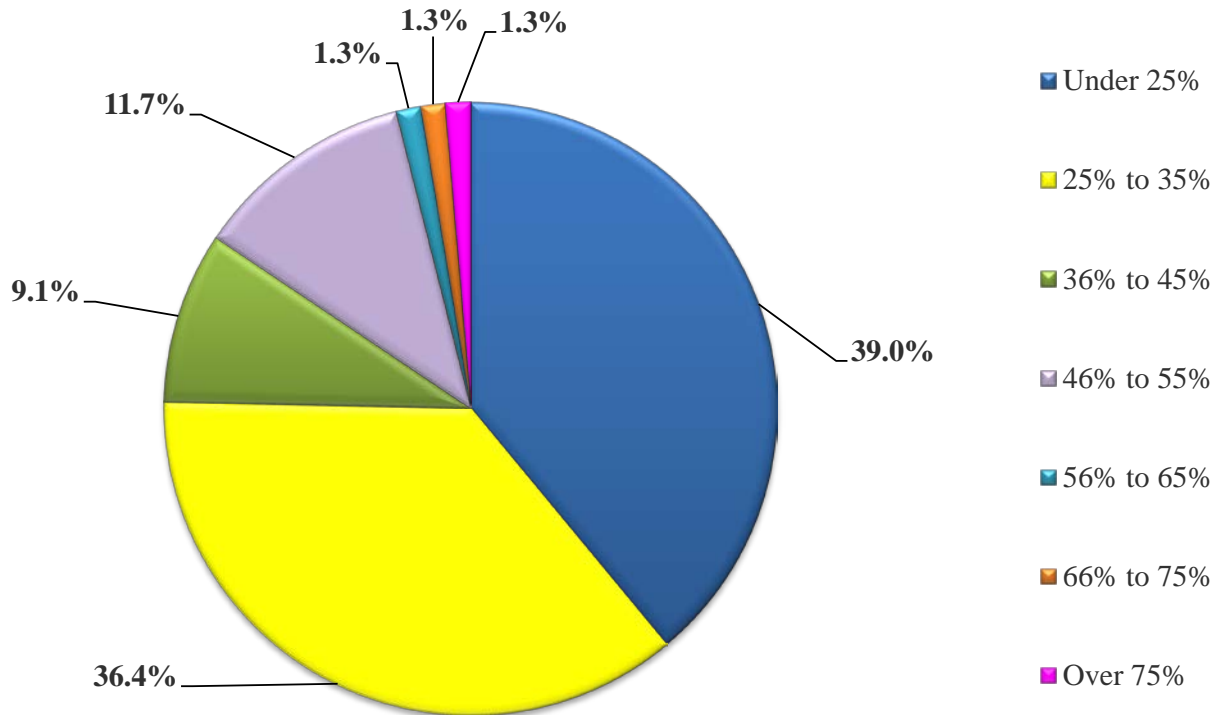
Benefits offered to attract and retain personnel



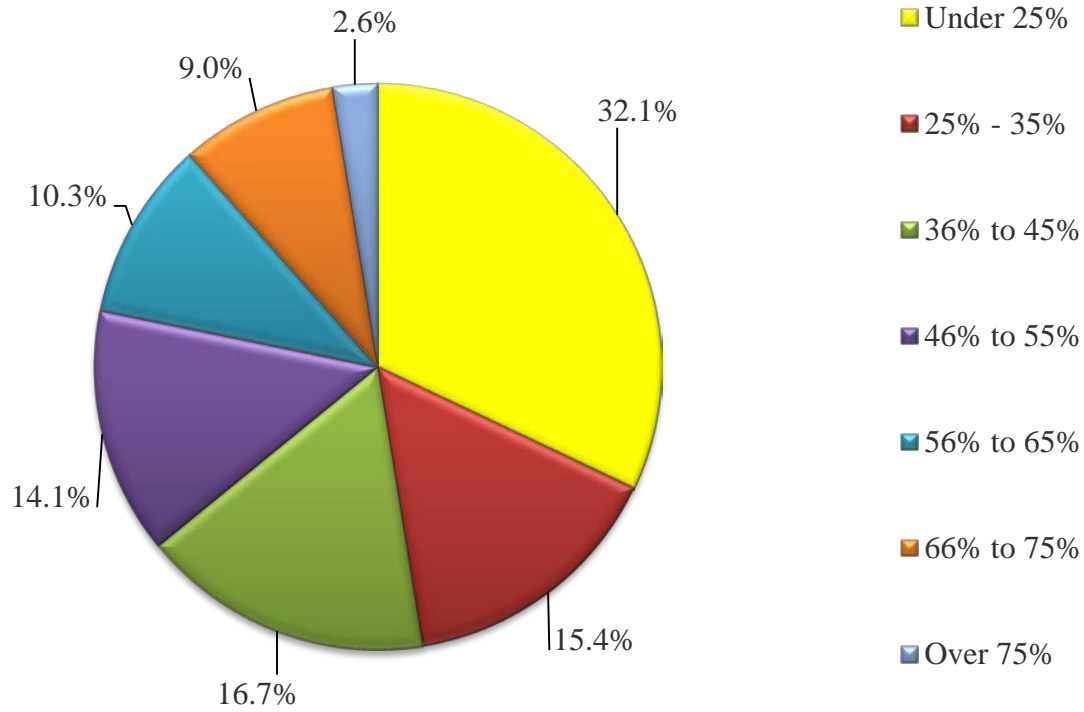
Do you contract for the following services?



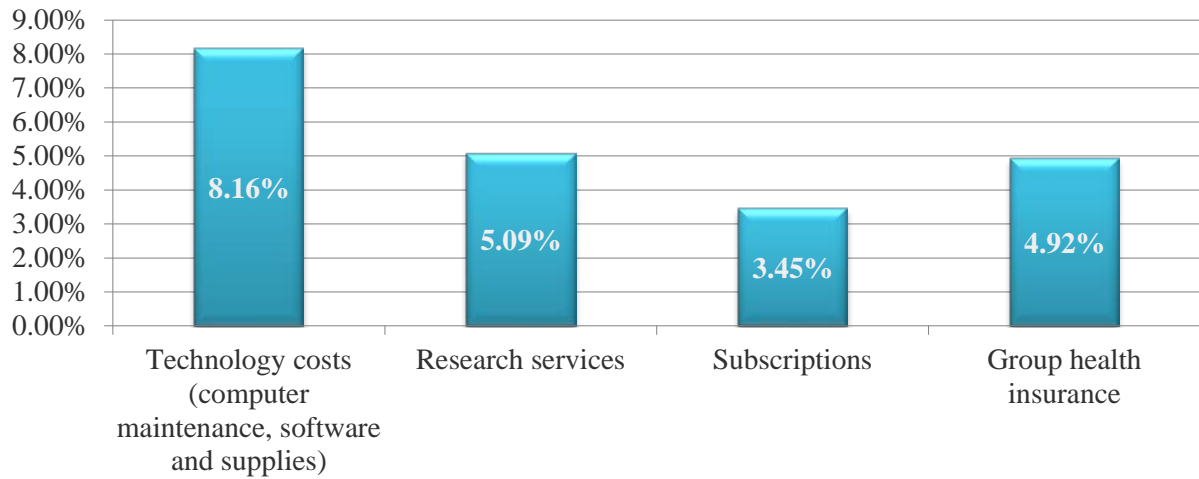
What percentage of your gross income is spent on non-salaried overhead?



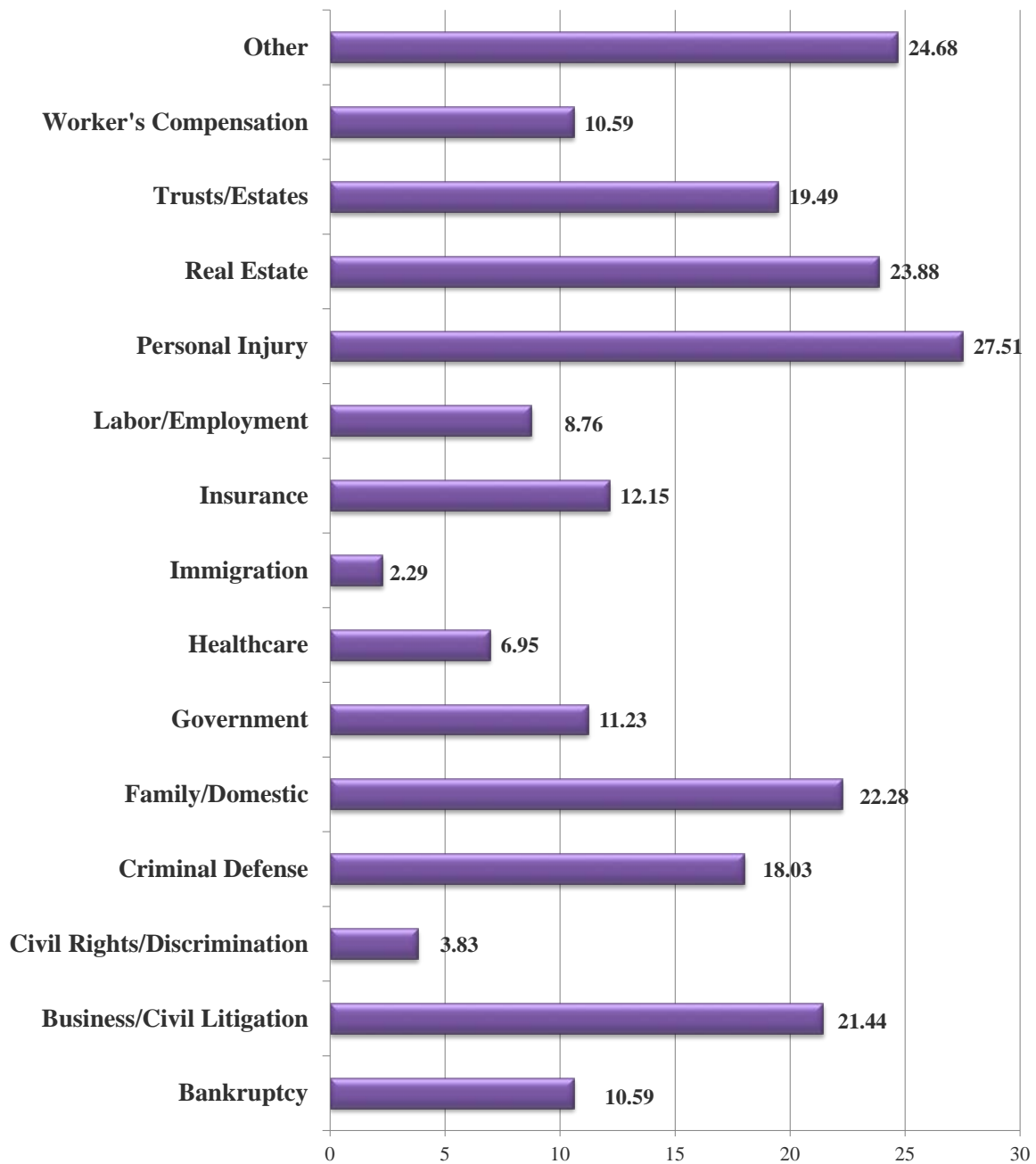
What percentage of your gross income is spent on professional salaries?



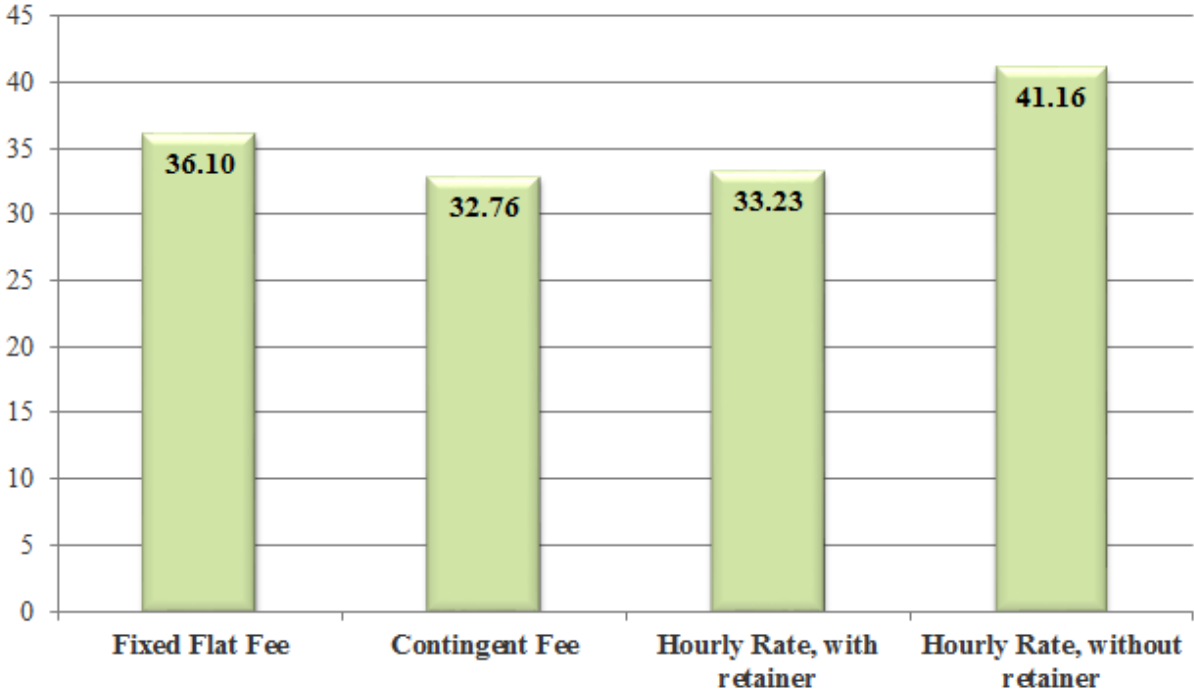
What percentage of gross income is spent on the following: (expense ÷ gross fees)



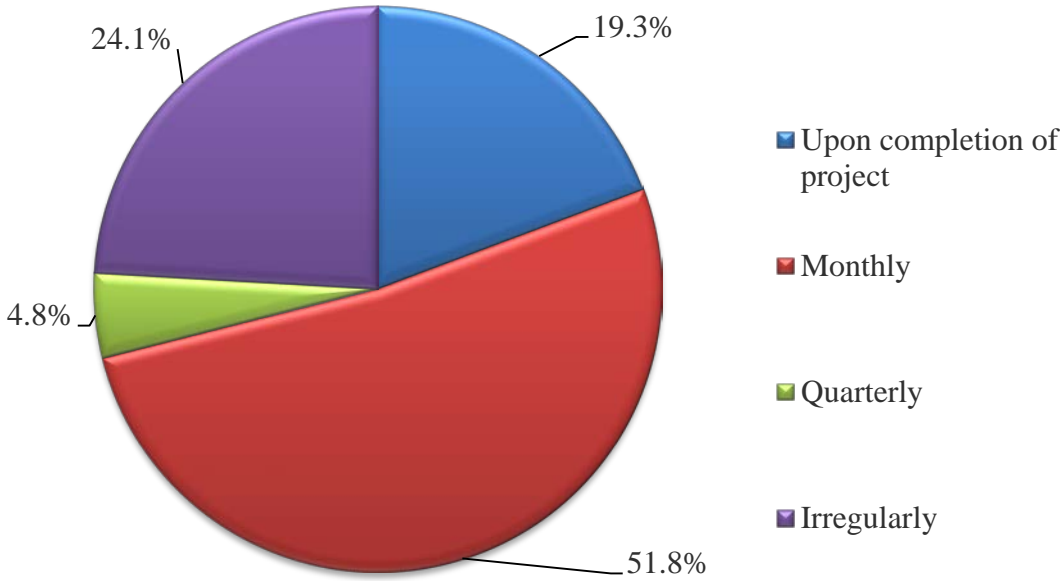
Percentage of your 2016 gross fees by area of practice



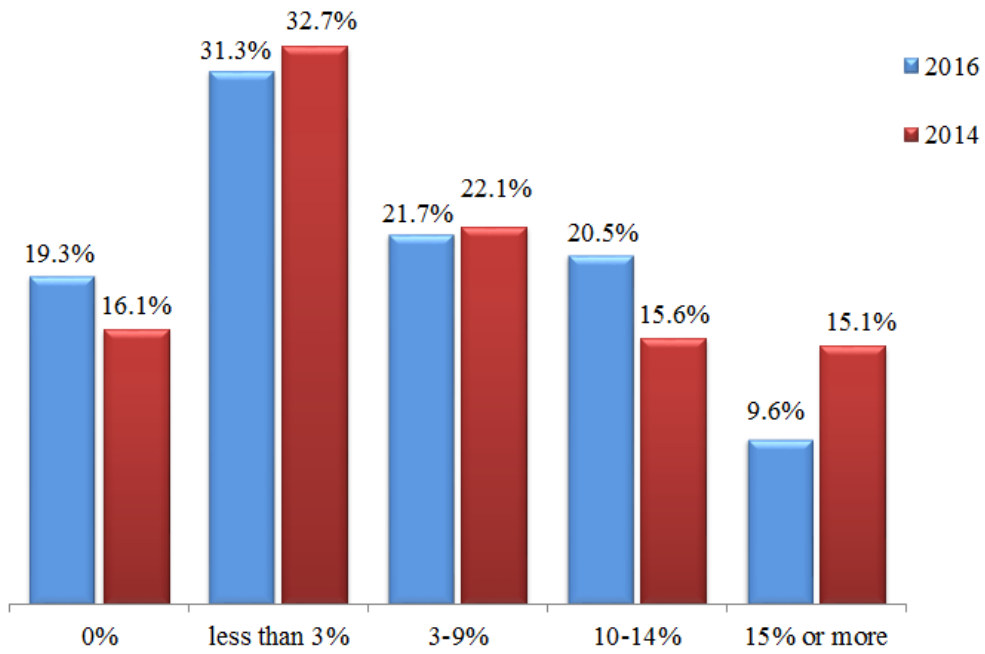
During 2016, what percentage of fees was billed using the following billing methods?



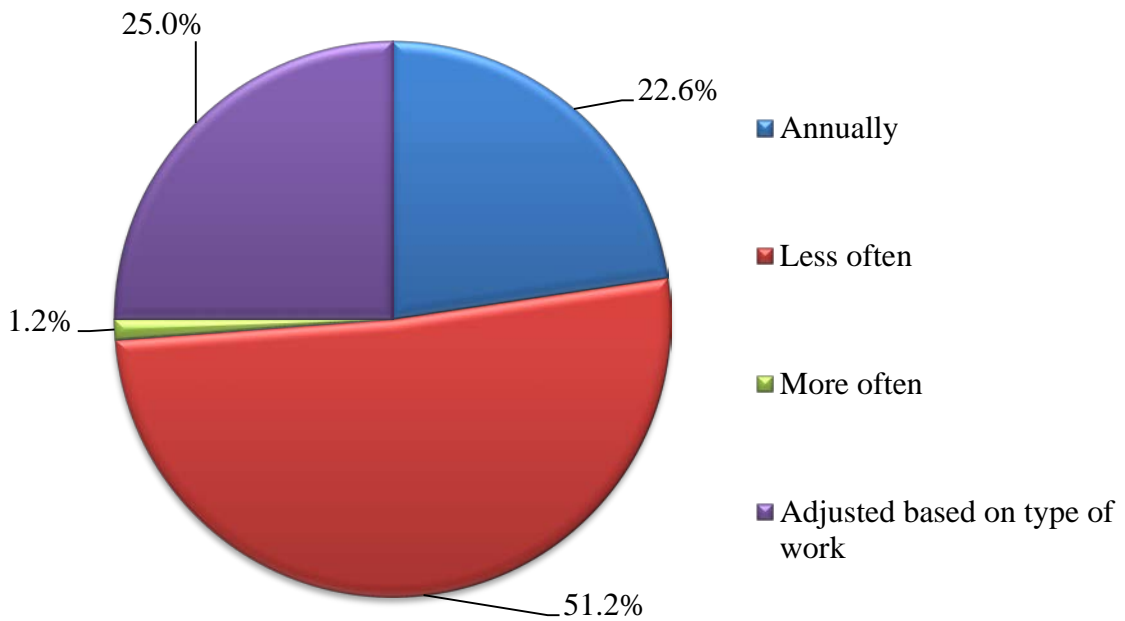
How often do you usually bill clients?



The percentage of fees that were uncollectable in 2016 was –



How often do you adjust hourly rates?

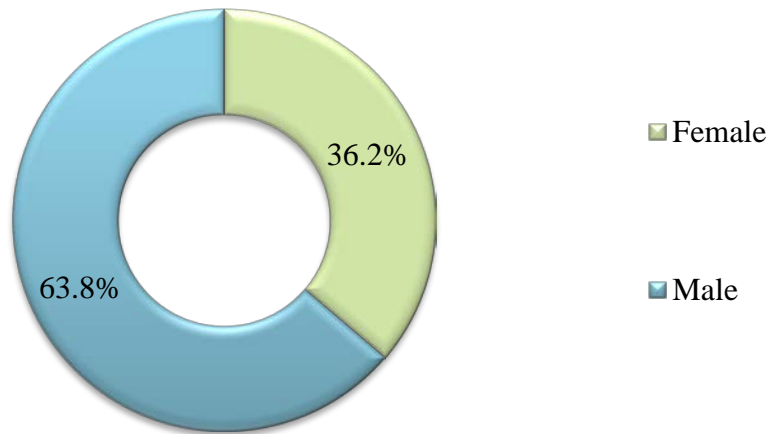


In what Mississippi County is your office located?

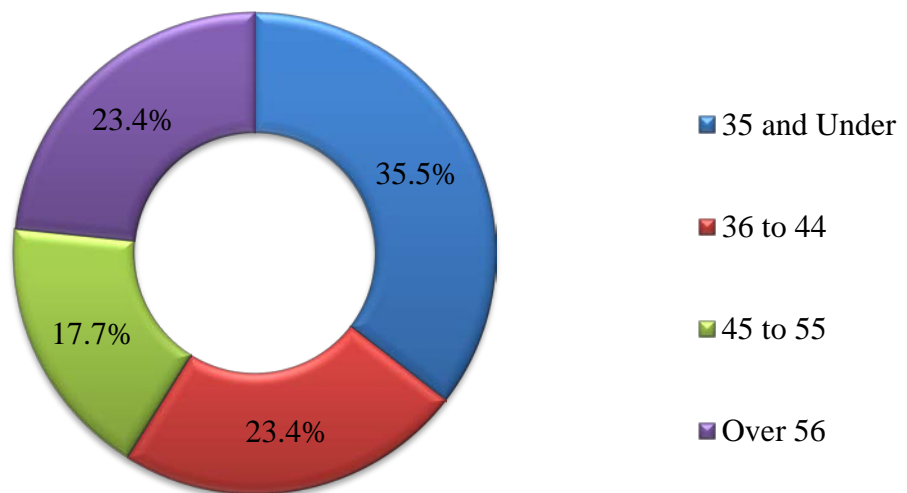
Adams	1.51%	Madison	12.45%
Alcorn	0.38%	Marion	0.38%
Benton	0.38%	Monroe	0.38%
Chickasaw	0.38%	Montgomery	0.38%
Coahoma	0.38%	N/A - Out of State	13.58%
Copiah	0.38%	Neshoba	0.75%
DeSoto	2.26%	Pearl River	0.38%
Forrest	0.75%	Pike	0.38%
Greene	0.38%	Rankin	6.04%
Grenada	0.38%	Sunflower	0.38%
Hancock	0.75%	Tallahatchie	0.38%
Harrison	7.55%	Tishomingo	0.38%
Hinds	29.06%	Warren	0.38%
Jackson	3.02%	Washington	1.13%
Lafayette	5.66%	Webster	0.38%
Lamar	2.26%	Wilkinson	0.38%
Lauderdale	1.51%		
Lee	3.02%		
Lincoln	1.51%		
Lowndes	0.38%		

Counties not shown did not participate in survey.

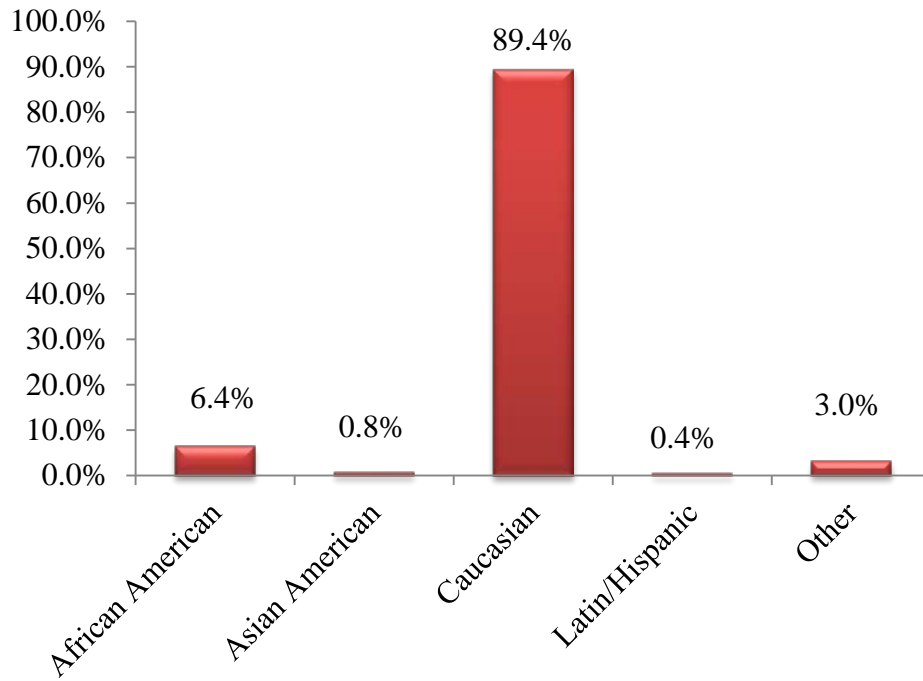
Respondents Gender



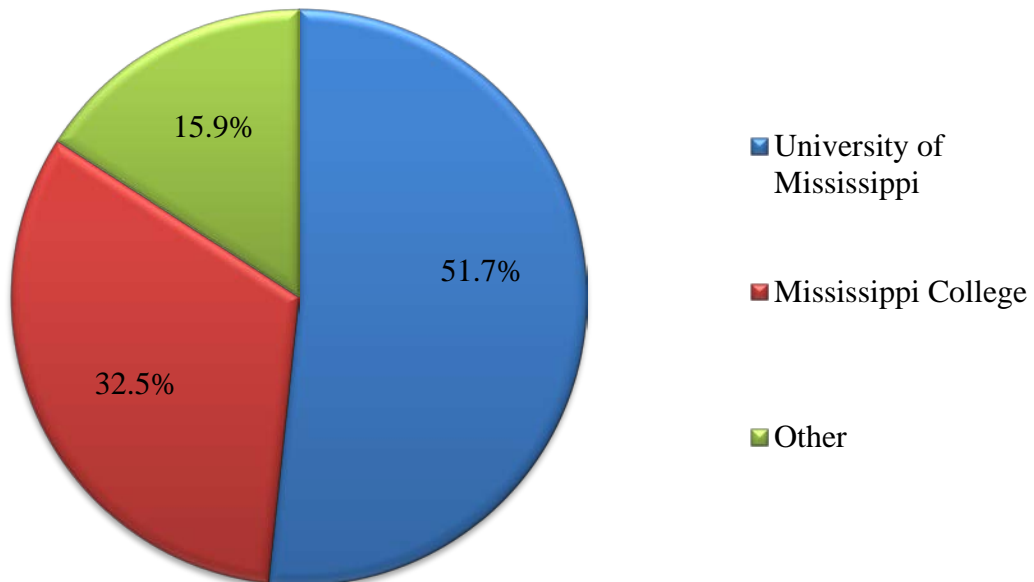
Respondents Age Group



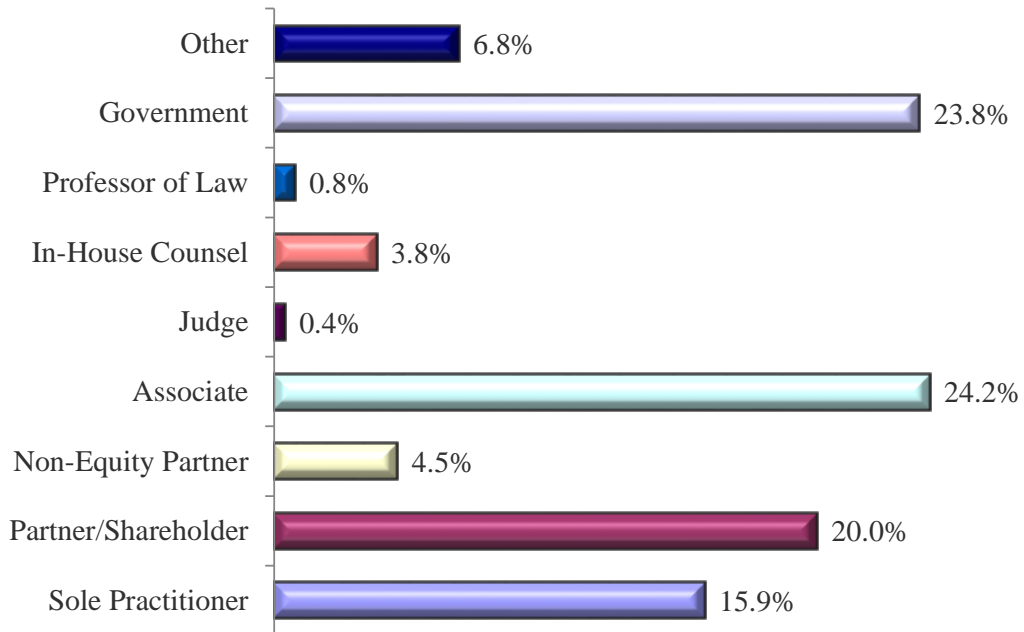
Racial / Ethnic Background of Respondents



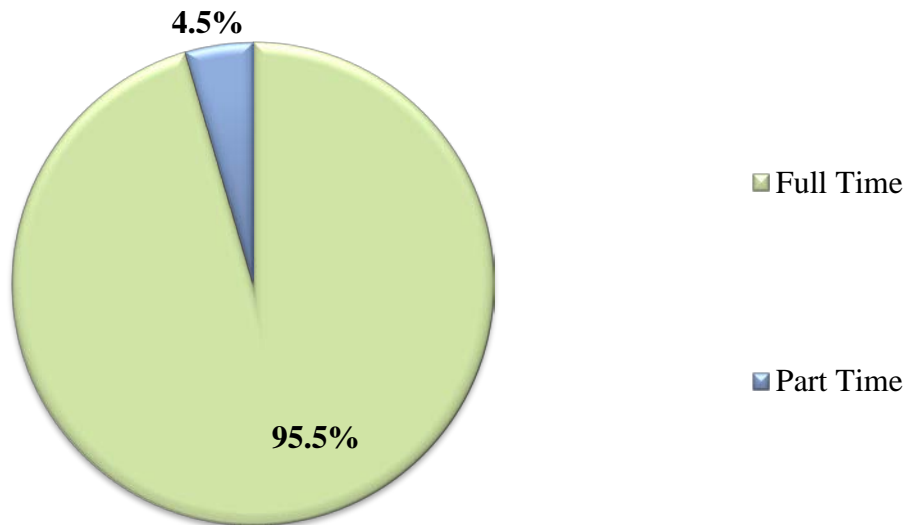
Where did you receive your legal education / training?



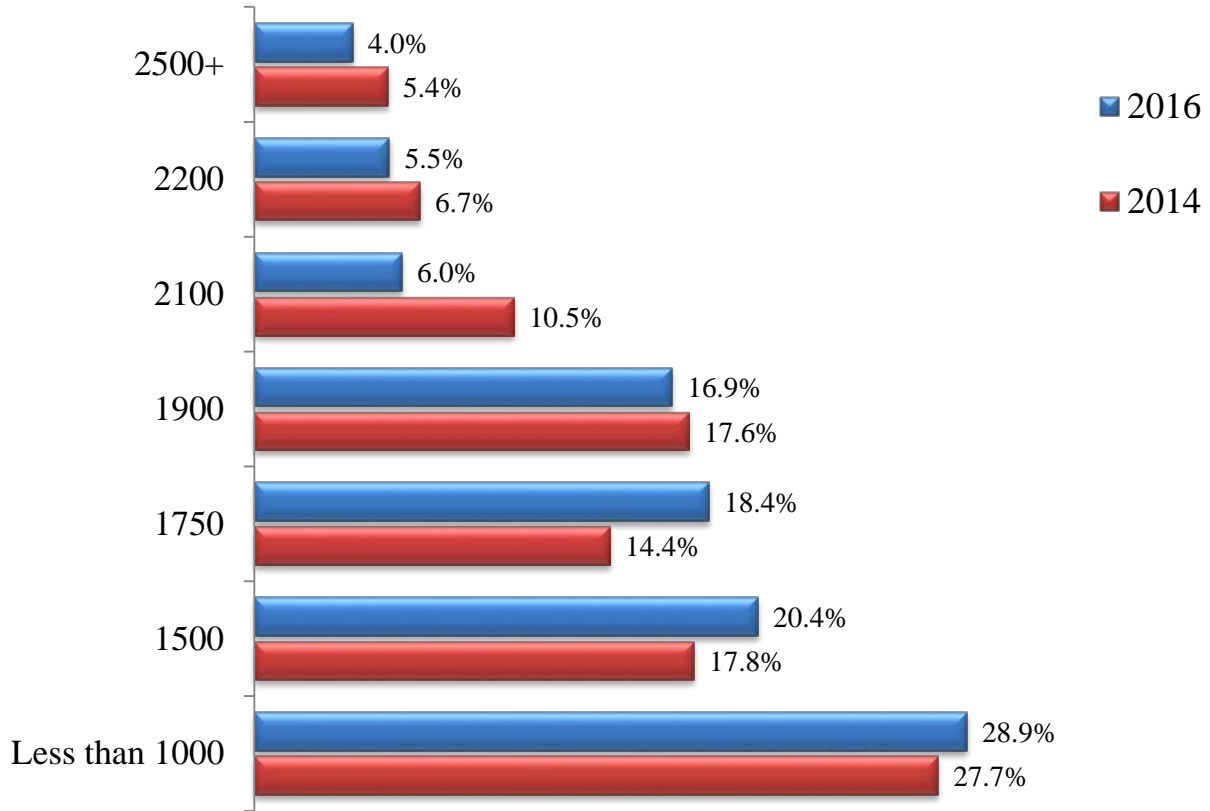
What is your type of employment?



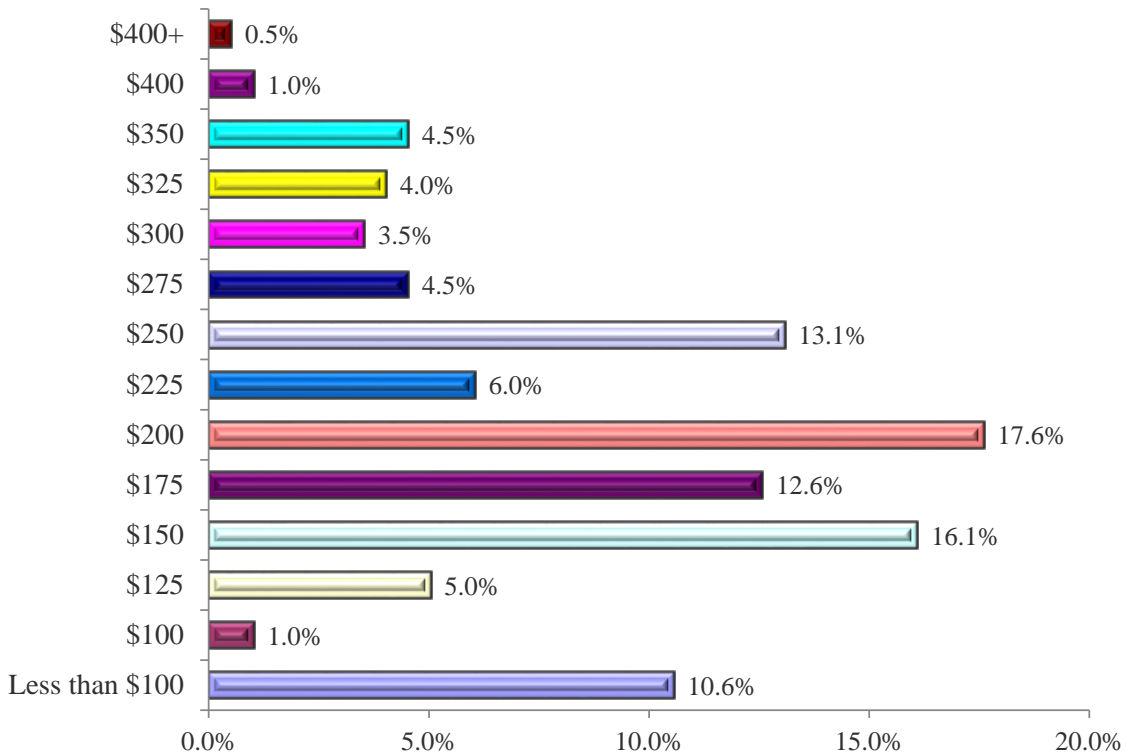
What is the status of your practice /employment?



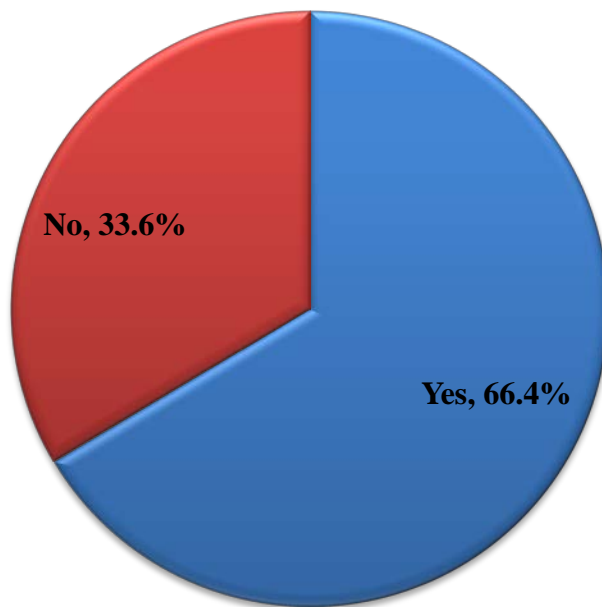
**On average, how many billable hours do you have per year?
(2016 / 2014 Comparative)**



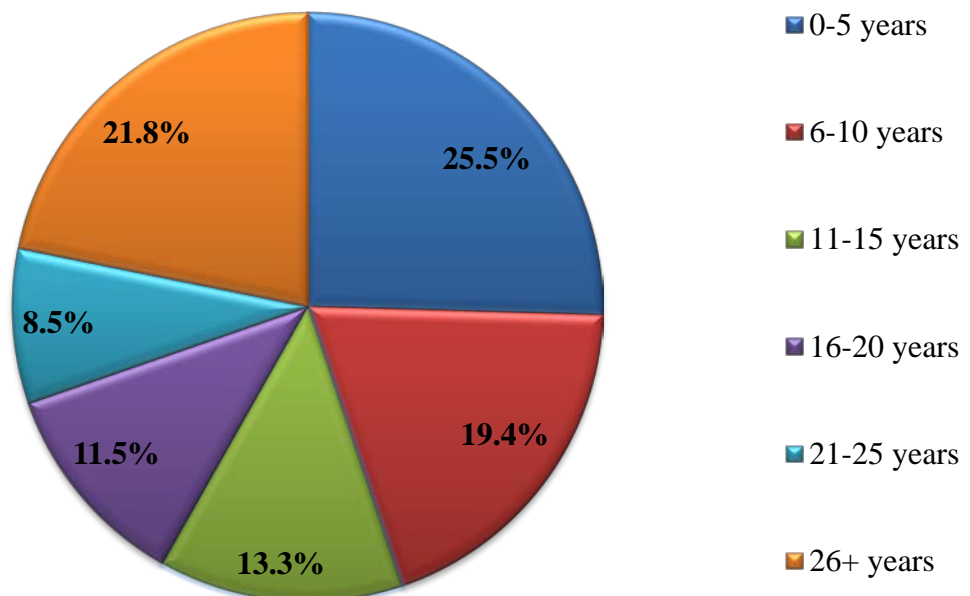
When you charge on an hourly basis, what is your standard hourly rate?



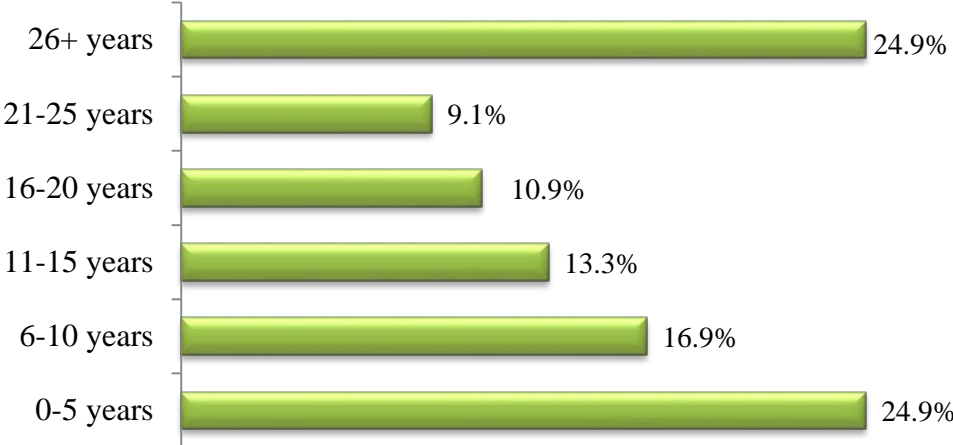
Are you in private practice?



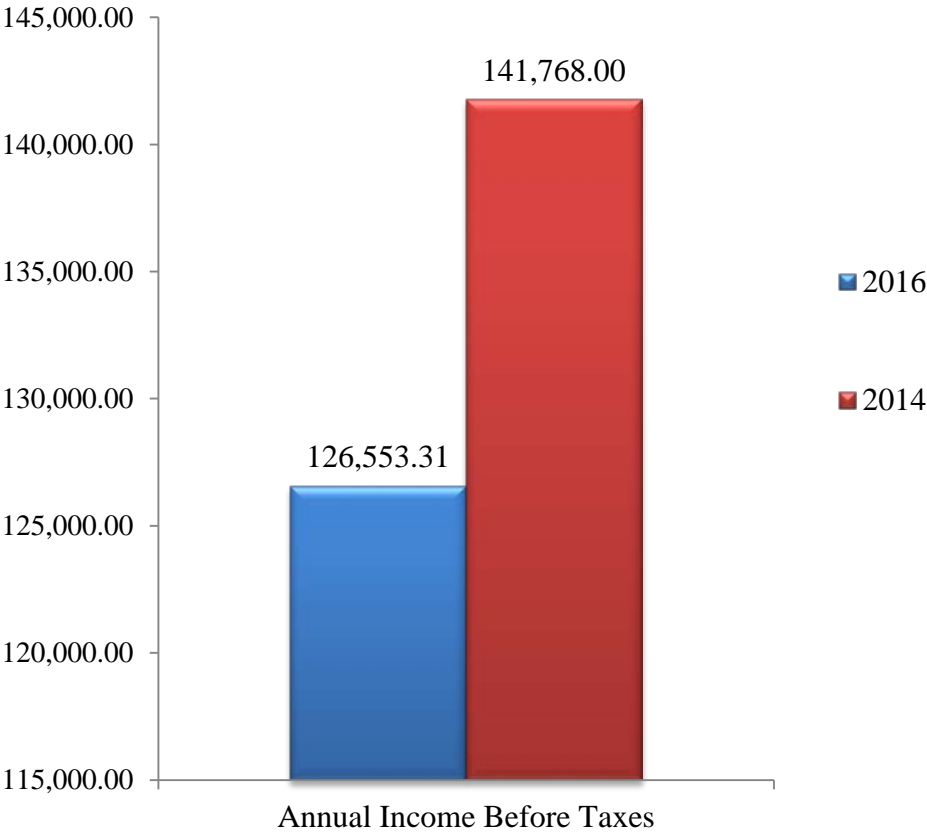
How many years have you been in private practice?



How long have you been a licensed attorney?

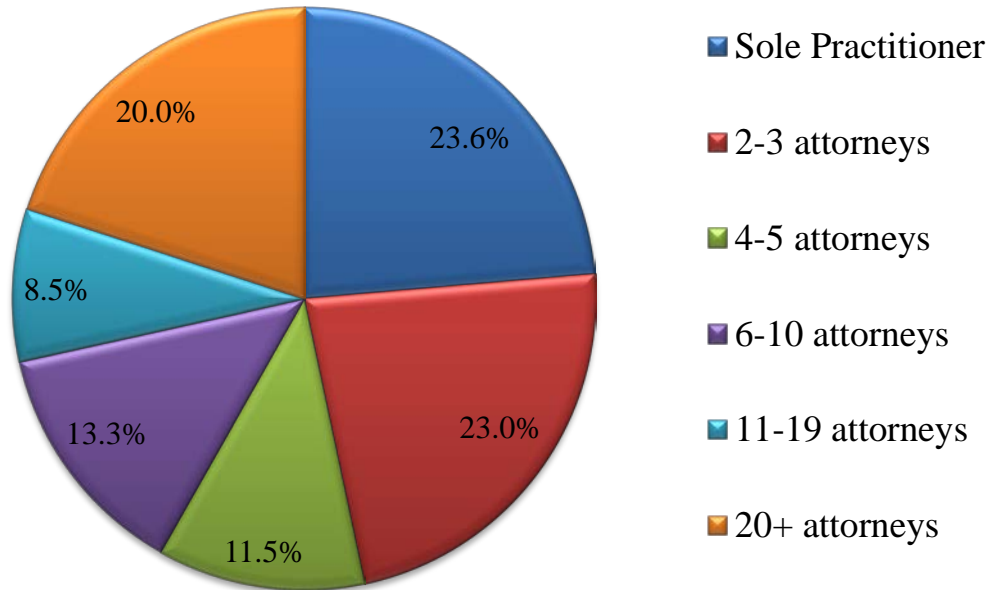


**On average, what was your personal annual income from practicing law in 2016?
(2016 / 2014 Comparative of all responses)**

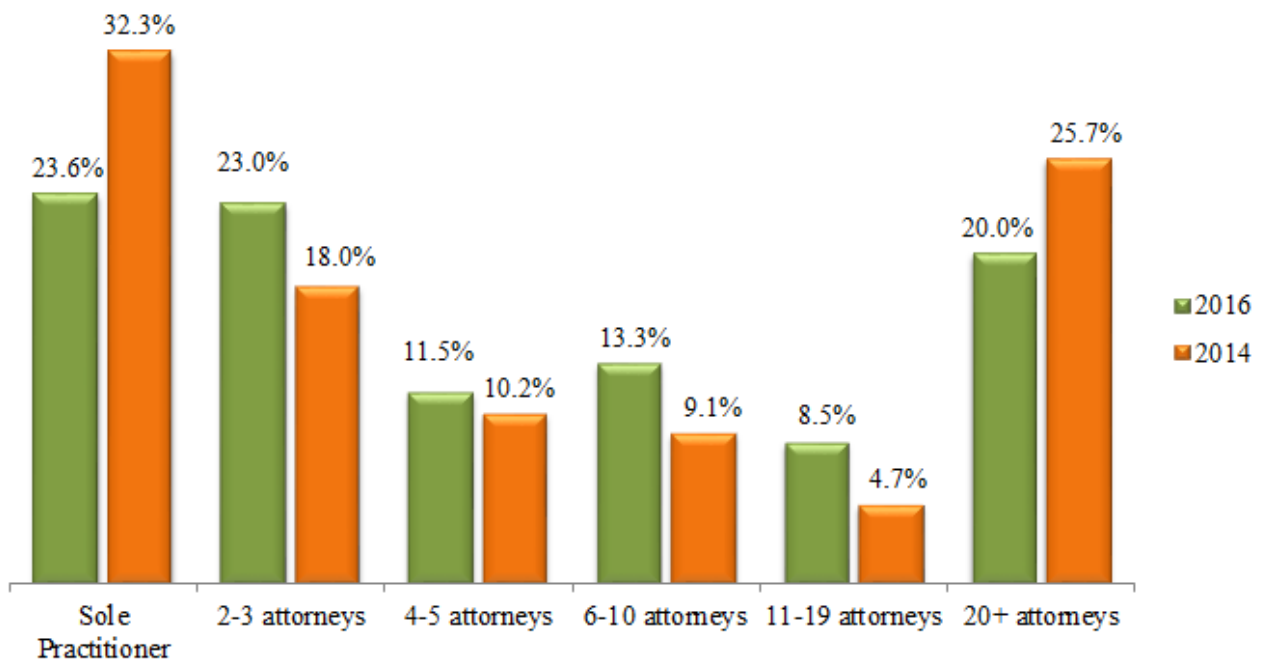


What is the size of your firm? (2016 / 2014 Comparative)

2016

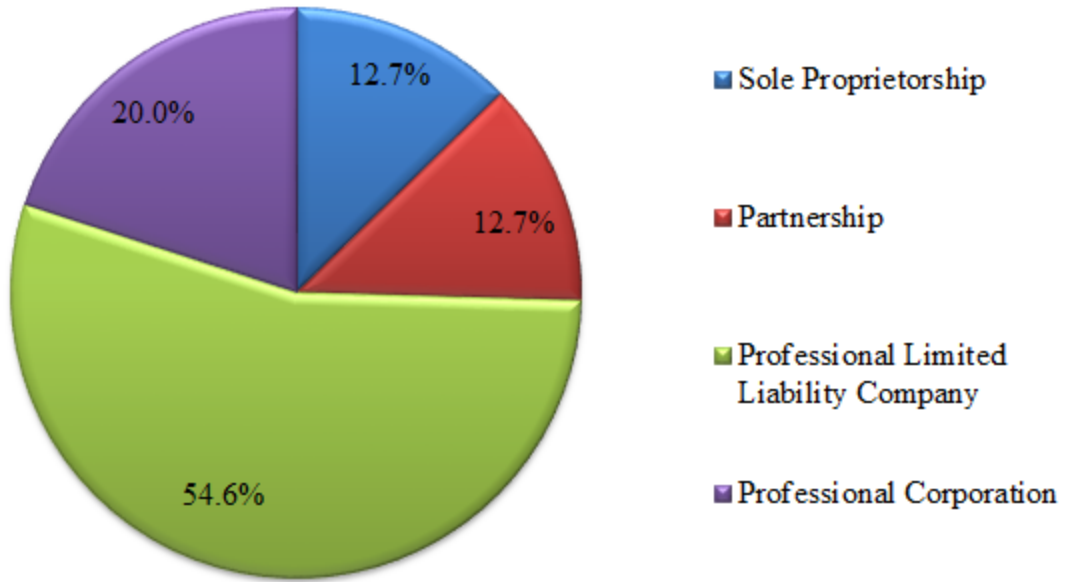


2016 / 2014

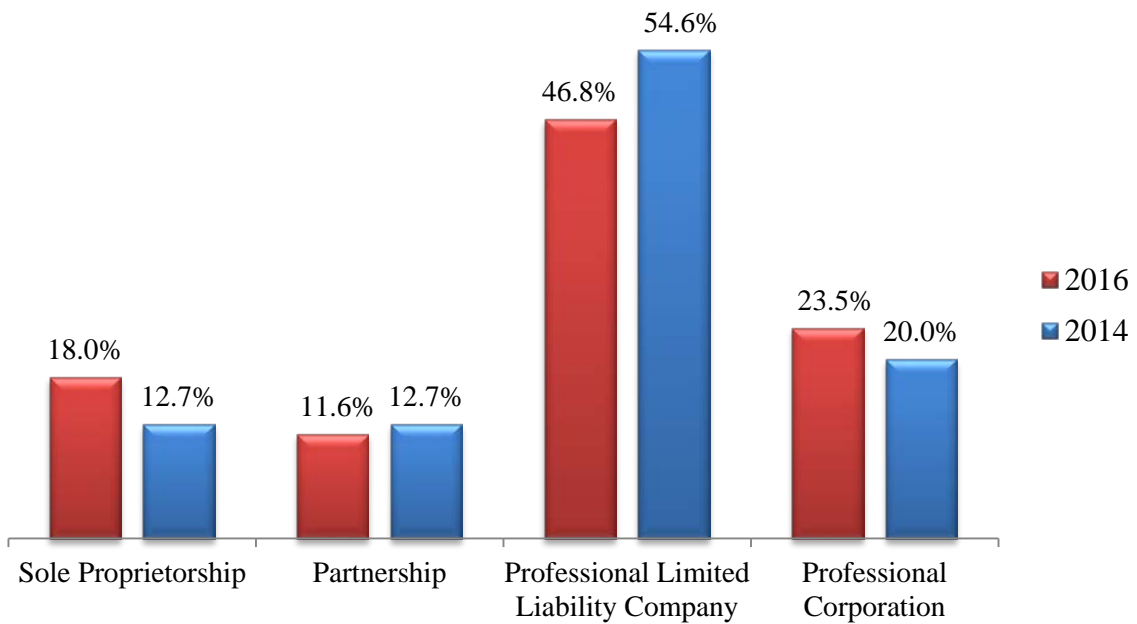


What is the structure of your firm? (2016 / 2014 Comparative)

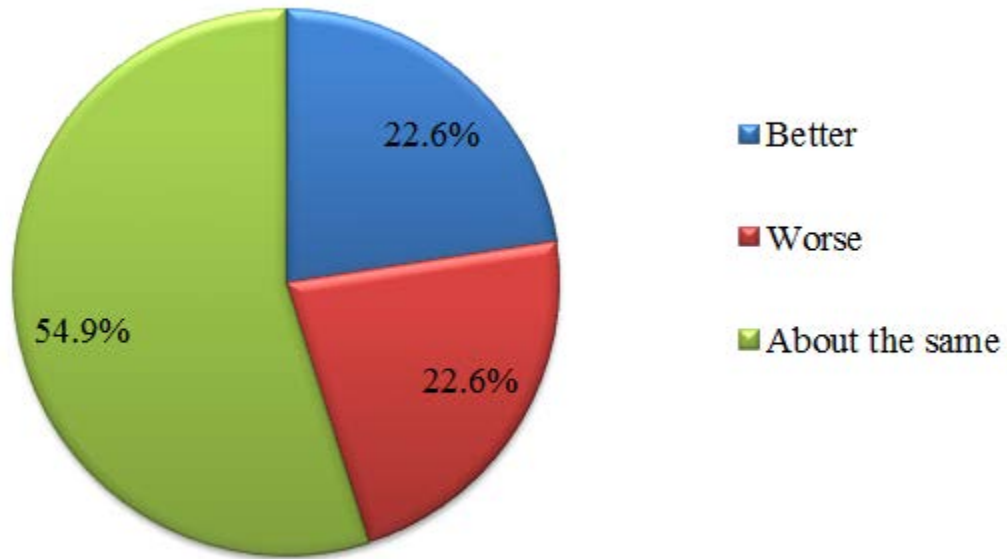
2016



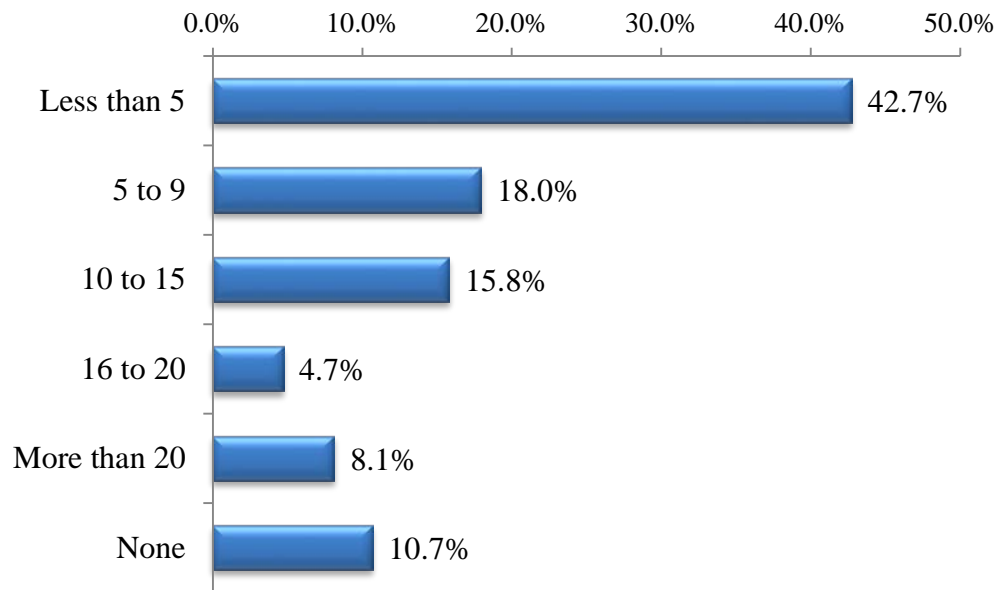
2016 / 2014



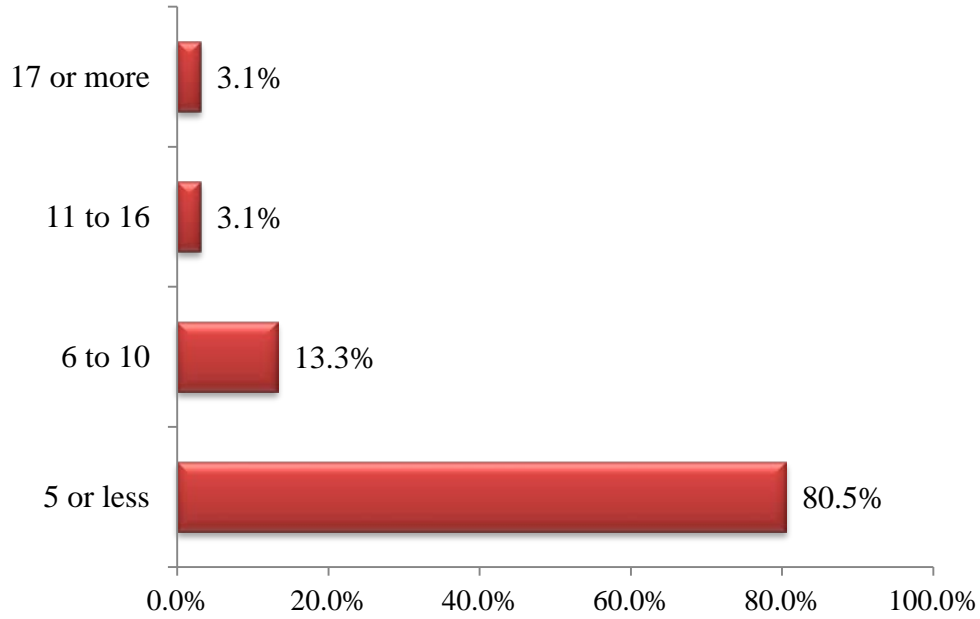
Compared to last year, on the whole, are the economic circumstances of practicing law:



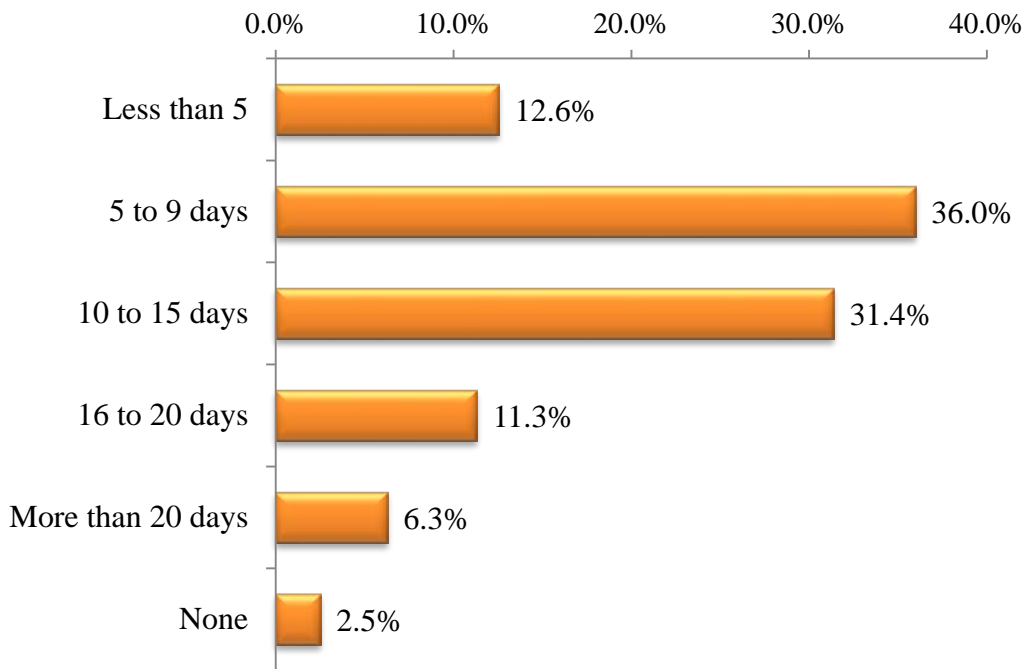
In an average month, how many hours do you spend on civic and community work?



In an average month, how many hours do you spend on pro bono legal work?

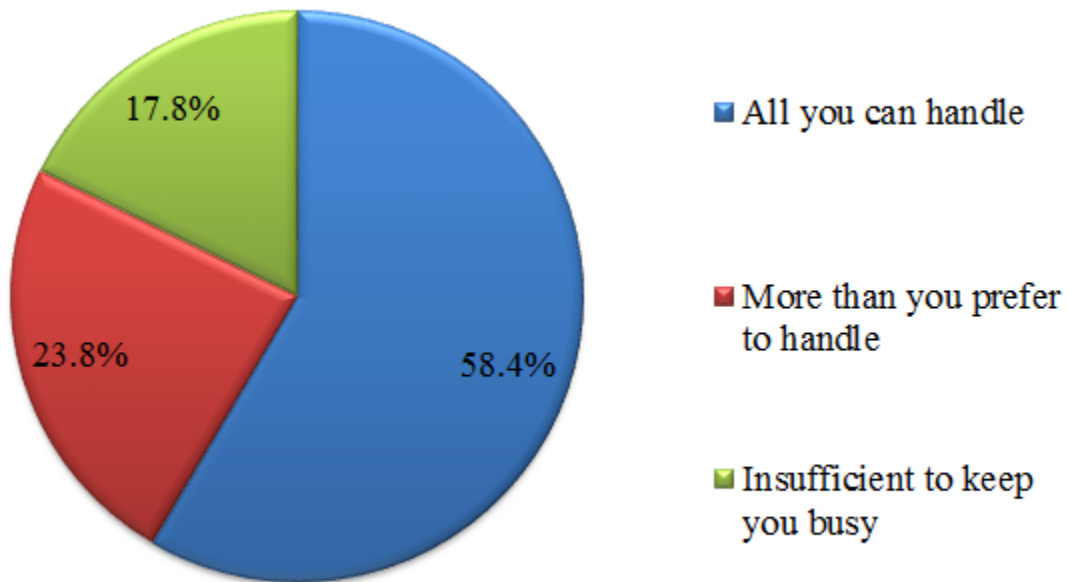


How many work days in 2016 did you take for vacation time?

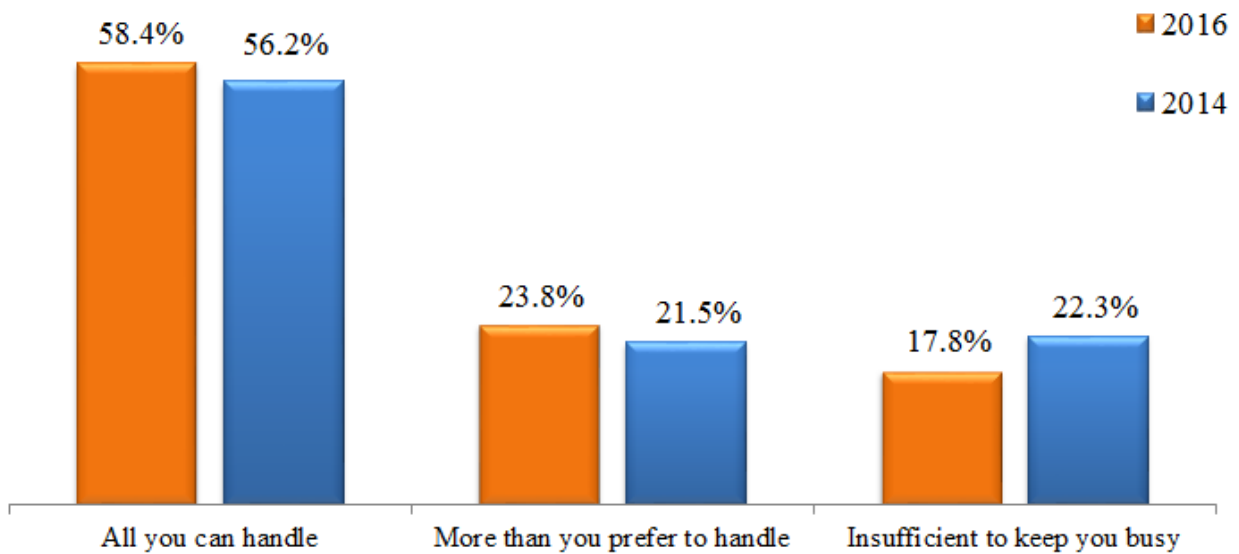


**With regards to your own activities, the quantity of your work is:
(2016 / 2014 Comparative)**

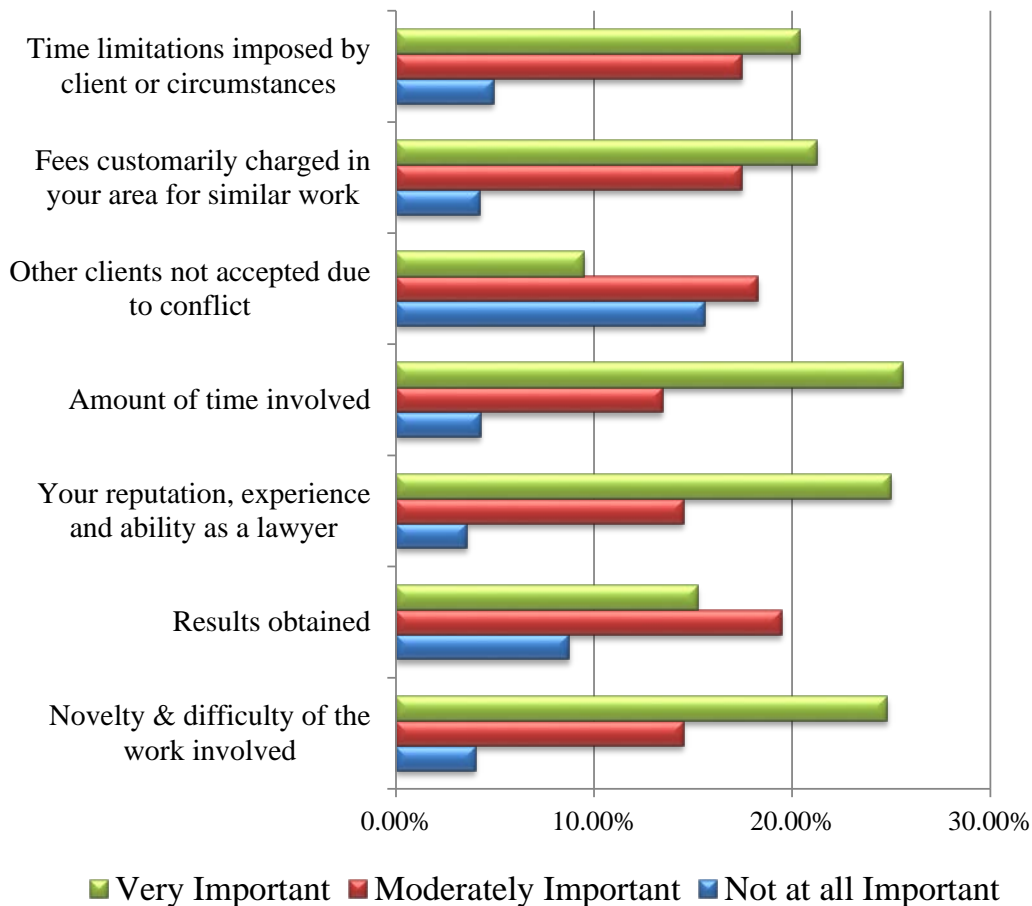
2016



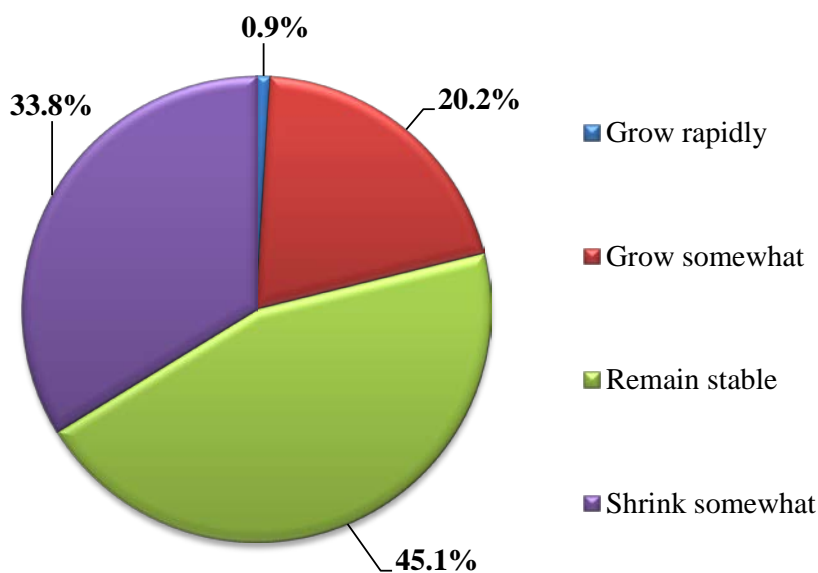
2016 / 2014



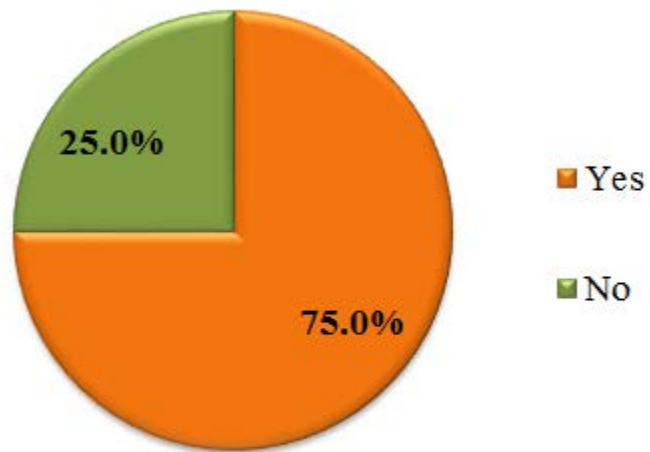
In determining fees, rate the following factors:



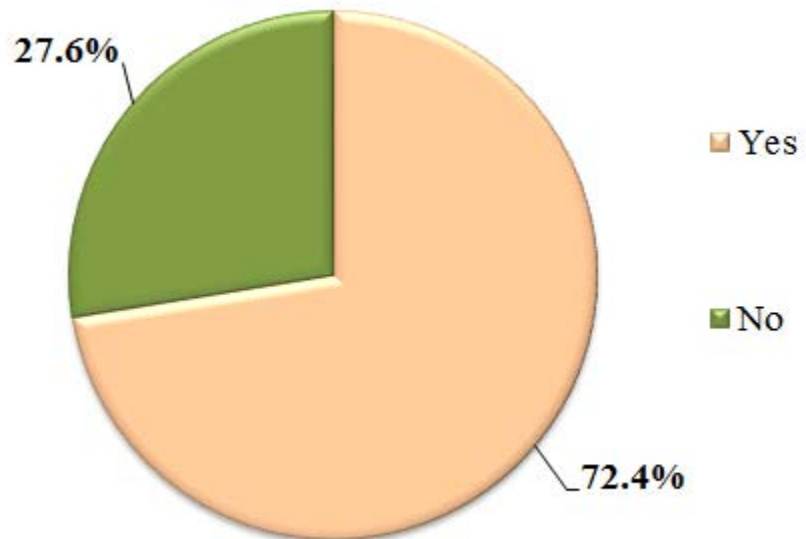
During the next 5 years do you expect the demand for paid billable lawyer services in your area to:



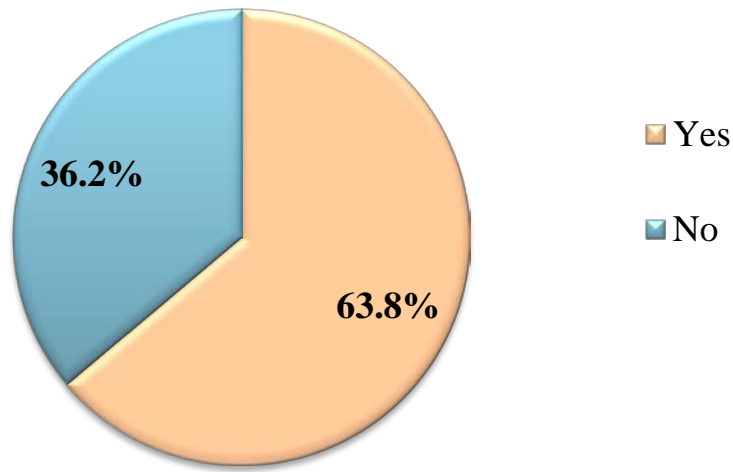
Do you have professional liability insurance?



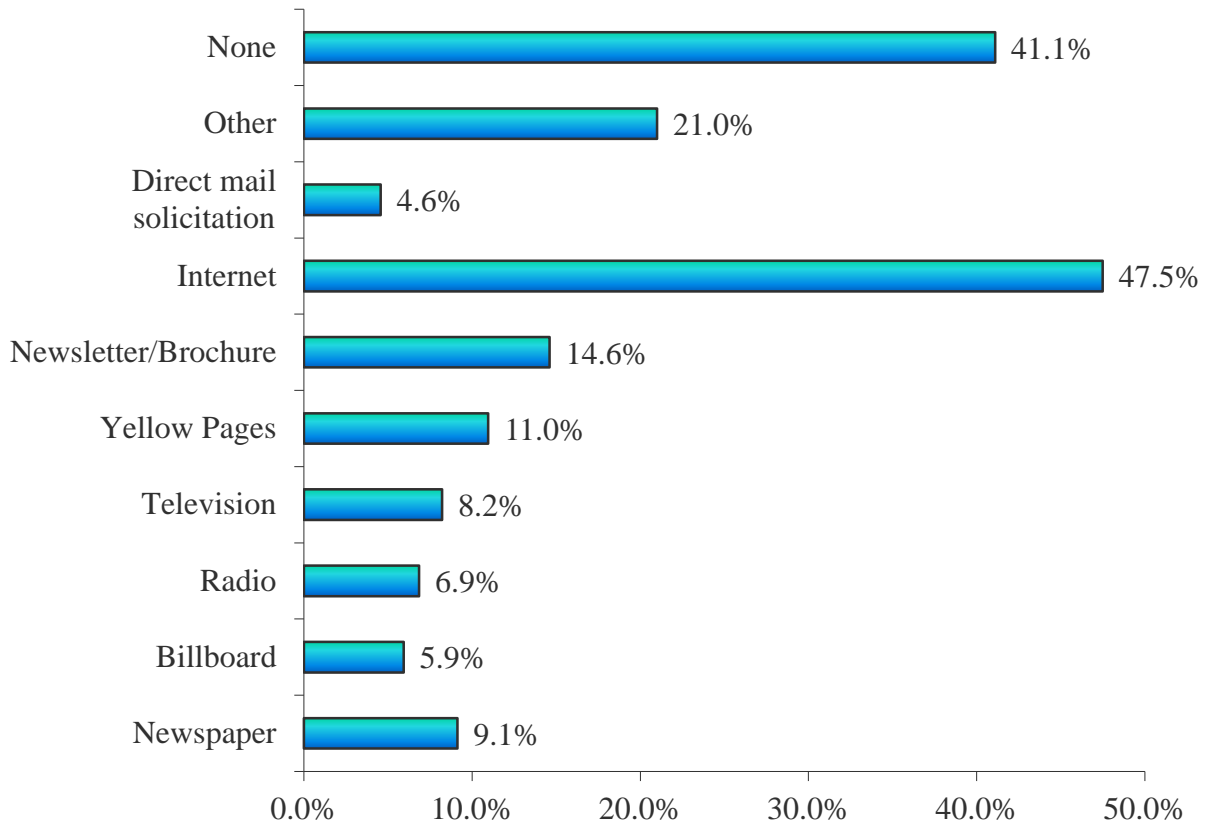
Should attorneys be required to maintain professional liability insurance?



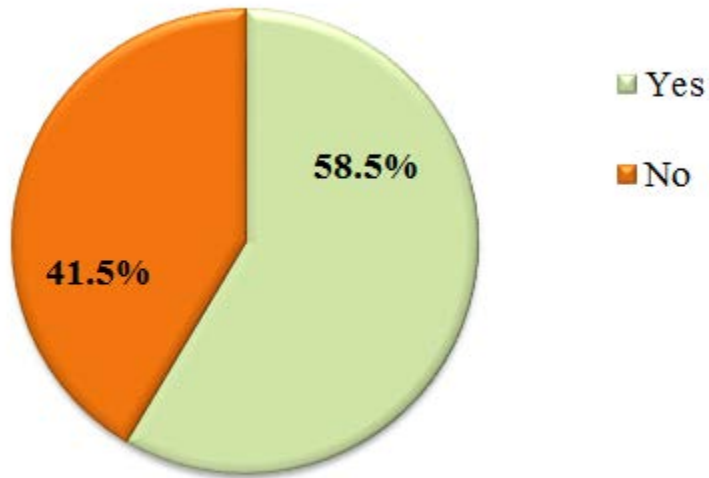
Should attorneys be required to disclose to their clients when the attorney does not maintain professional liability insurance coverage?



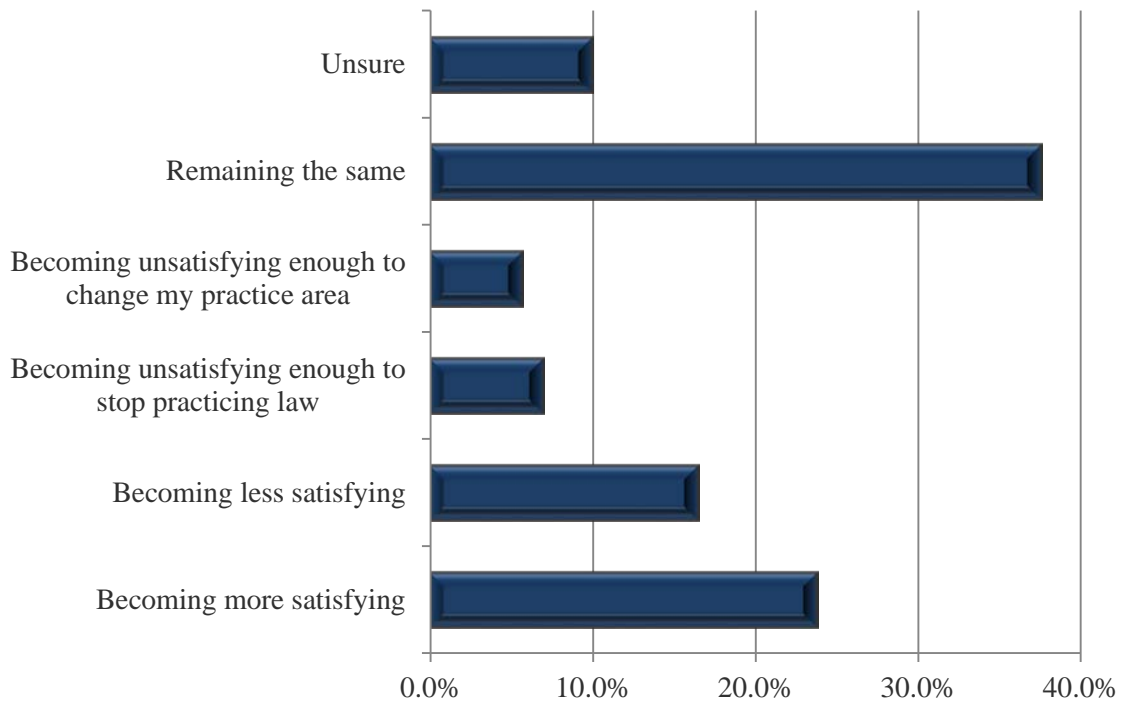
What types of advertising/marketing do you or your firm use?



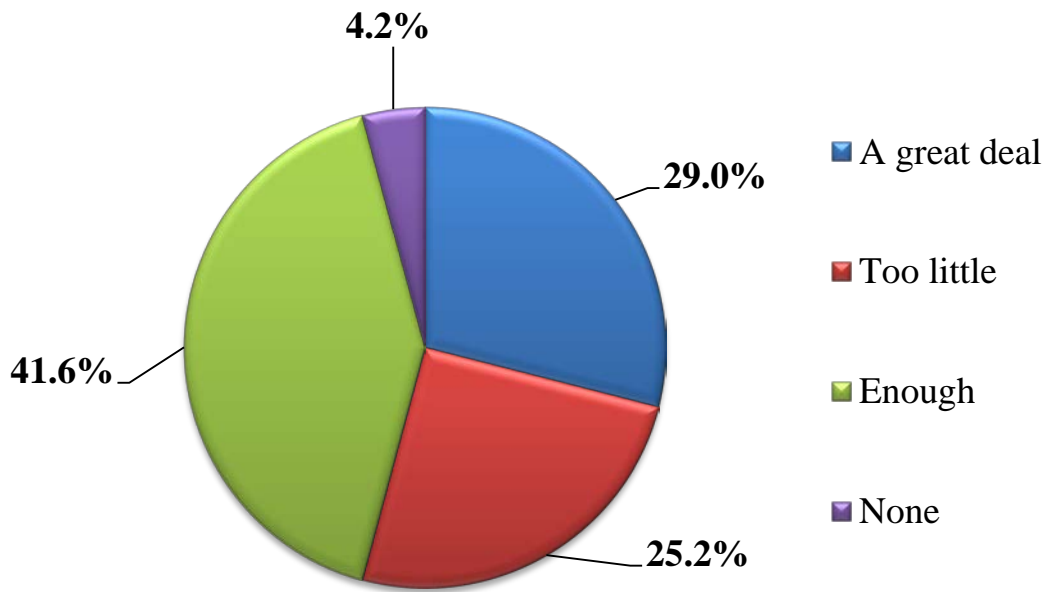
Would you pursue the legal profession as a career if you were making the decision again?



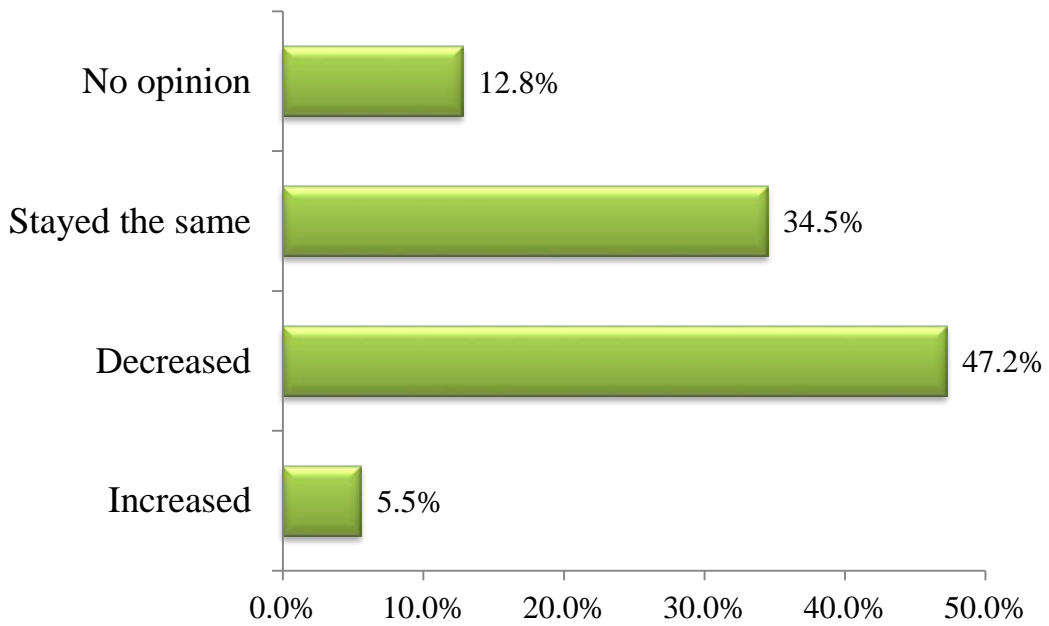
What are your expectations with the practice of law?



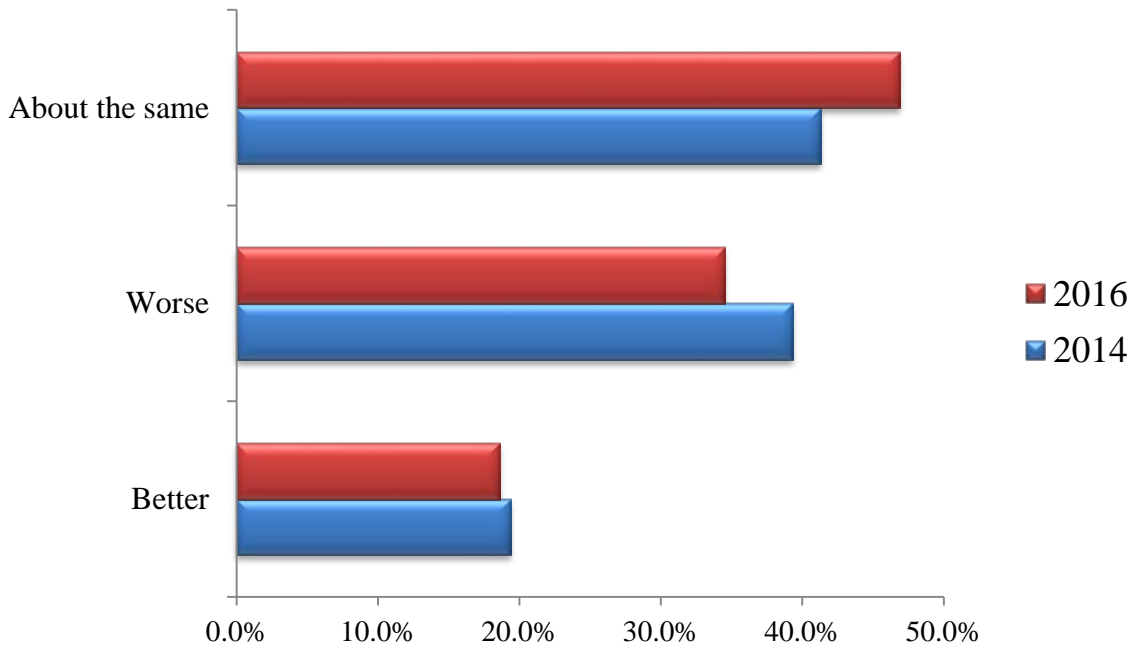
Do you get personal satisfaction from the practice of law?



In the past five years, do you think that the professionalism among lawyers has...



**What are your perceptions of the current economic conditions
for your law practice compared to prior years?
(2016 / 2014 Comparative)**



**What is your perception of the future economic outlook
for your law practice?**

